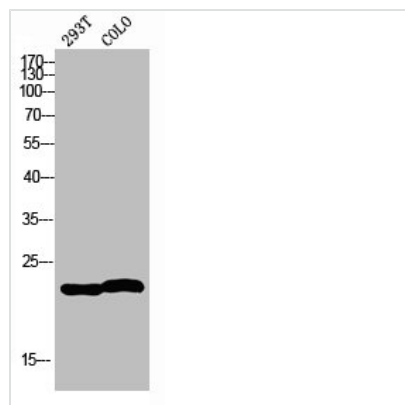




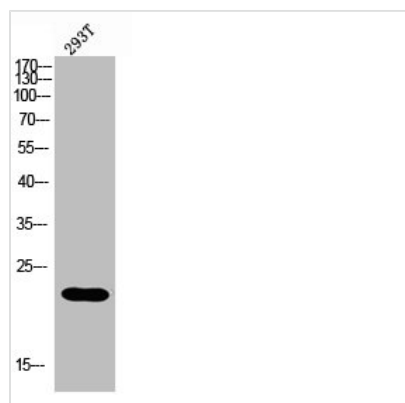
MRPL35 Antibody

Product Code	CSB-PA473419
Storage	Upon receipt, store at -20°C or -80°C. Avoid repeated freeze.
Uniprot No.	Q9NZE8
Immunogen	Synthesized peptide derived from the Internal region of Human MRP-L35. at AA range: 80-160
Raised In	Rabbit
Species Reactivity	Human, Mouse
Tested Applications	WB, ELISA; WB:1:500-1:2000, ELISA:1:10000
Form	Liquid
Conjugate	Non-conjugated
Storage Buffer	Liquid in PBS containing 50% glycerol, 0.5% BSA and 0.02% sodium azide.
Purification Method	The antibody was affinity-purified from rabbit antiserum by affinity-chromatography using epitope-specific immunogen.
Alias	MRPL35; BM-007; 39S ribosomal protein L35, mitochondrial; L35mt; MRP-L35
Immunogen Species	Homo sapiens (Human)
Target Names	MRPL35

Image



Western blot analysis of 293T COLO using MRP-L35 antibody. Antibody was diluted at 1:2000. Secondary antibody was diluted at 1:20000



Western blot analysis of 293 using MRP-L35 antibody. Antibody was diluted at 1:2000. Secondary antibody was diluted at 1:20000



Usage

For Research Use Only. Not for use in diagnostic or therapeutic procedures.