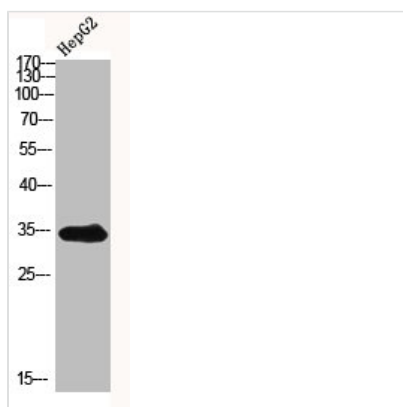




# ACER1 Antibody

<b>Product Code</b>	CSB-PA906051
<b>Storage</b>	Upon receipt, store at -20°C or -80°C. Avoid repeated freeze.
<b>Uniprot No.</b>	Q8TDN7
<b>Immunogen</b>	Synthesized peptide derived from the Internal region of Human ASAH3. at AA range: 100-180
<b>Raised In</b>	Rabbit
<b>Species Reactivity</b>	Human
<b>Tested Applications</b>	WB, ELISA; WB:1:500-1:2000, ELISA:1:10000
<b>Form</b>	Liquid
<b>Conjugate</b>	Non-conjugated
<b>Storage Buffer</b>	Liquid in PBS containing 50% glycerol, 0.5% BSA and 0.02% sodium azide.
<b>Purification Method</b>	The antibody was affinity-purified from rabbit antiserum by affinity-chromatography using epitope-specific immunogen.
<b>Alias</b>	ACER1; ASAH3; Alkaline ceramidase 1; AlkCDase 1; Alkaline CDase 1; Acylsphingosine deacylase 3; N-acylsphingosine amidohydrolase 3
<b>Immunogen Species</b>	Homo sapiens (Human)
<b>Target Names</b>	ACER1

## Image



Western blot analysis of HepG2 using ASAH3 antibody.. Secondary antibody was diluted at 1:20000

## Usage

For Research Use Only. Not for use in diagnostic or therapeutic procedures.