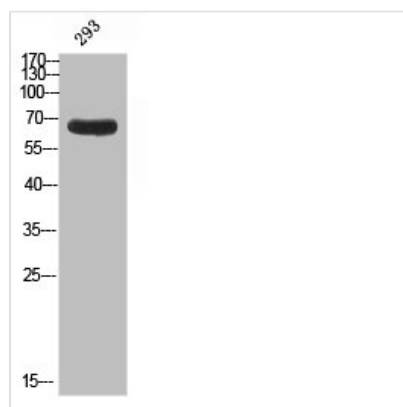




APPBP2 Antibody

| | |
|----------------------------|---|
| Product Code | CSB-PA676045 |
| Storage | Upon receipt, store at -20°C or -80°C. Avoid repeated freeze. |
| Uniprot No. | Q92624 |
| Immunogen | Synthesized peptide derived from the Internal region of Human APP-BP2. at AA range: 390-470 |
| Raised In | Rabbit |
| Species Reactivity | Human,Mouse,Rat |
| Tested Applications | WB, ELISA; WB:1:500-1:2000, ELISA:1:10000 |
| Form | Liquid |
| Conjugate | Non-conjugated |
| Storage Buffer | Liquid in PBS containing 50% glycerol, 0.5% BSA and 0.02% sodium azide. |
| Purification Method | The antibody was affinity-purified from rabbit antiserum by affinity-chromatography using epitope-specific immunogen. |
| Alias | APPBP2; KIAA0228; PAT1; Amyloid protein-binding protein 2; Amyloid beta precursor protein-binding protein 2; APP-BP2; Protein interacting with APP tail 1 |
| Immunogen Species | Homo sapiens (Human) |
| Target Names | APPBP2 |

Image



Western blot analysis of 293 using APP-BP2 antibody.. Secondary antibody was diluted at 1:20000

Usage

For Research Use Only. Not for use in diagnostic or therapeutic procedures.