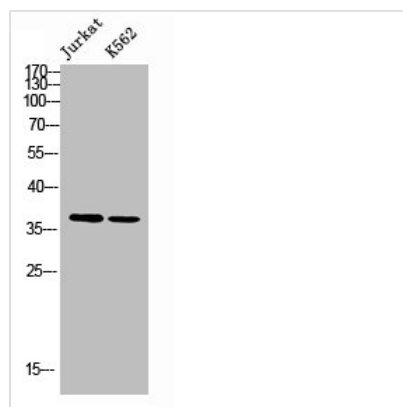




SLC9A3R2 Antibody

Product Code	CSB-PA836821
Storage	Upon receipt, store at -20°C or -80°C. Avoid repeated freeze.
Uniprot No.	Q15599
Immunogen	Synthesized peptide derived from the N-terminal region of Human NHERF-2. at AA range: 20-100
Raised In	Rabbit
Species Reactivity	Human,Mouse,Rat
Tested Applications	WB, ELISA; WB:1:500-1:2000, ELISA:1:10000
Form	Liquid
Conjugate	Non-conjugated
Storage Buffer	Liquid in PBS containing 50% glycerol, 0.5% BSA and 0.02% sodium azide.
Purification Method	The antibody was affinity-purified from rabbit antiserum by affinity-chromatography using epitope-specific immunogen.
Alias	SLC9A3R2; NHERF2; Na(+)/H(+) exchange regulatory cofactor NHE-RF2; NHERF-2; NHE3 kinase A regulatory protein E3KARP; SRY-interacting protein 1; SIP-1; Sodium-hydrogen exchanger regulatory factor 2; Solute carrier family 9 isoform A3 regulatory factor 2; T
Immunogen Species	Homo sapiens (Human)
Target Names	SLC9A3R2

Image



Western blot analysis of JK K562 using NHERF-2 antibody.. Secondary antibody was diluted at 1:20000