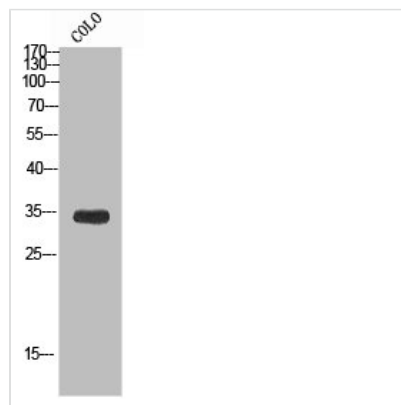




TCEAL6 Antibody

Product Code	CSB-PA255089
Storage	Upon receipt, store at -20°C or -80°C. Avoid repeated freeze.
Uniprot No.	Q6IPX3
Immunogen	Synthesized peptide derived from the Internal region of Human TCEAL6. at AA range: 1-80
Raised In	Rabbit
Species Reactivity	Human
Tested Applications	WB, ELISA; WB:1:500-1:2000, ELISA:1:10000
Form	Liquid
Conjugate	Non-conjugated
Storage Buffer	Liquid in PBS containing 50% glycerol, 0.5% BSA and 0.02% sodium azide.
Purification Method	The antibody was affinity-purified from rabbit antiserum by affinity-chromatography using epitope-specific immunogen.
Alias	TCEAL6; Transcription elongation factor A protein-like 6; TCEA-like protein 6; Transcription elongation factor S-II protein-like 6
Immunogen Species	Homo sapiens (Human)
Target Names	TCEAL6

Image



Western blot analysis of CoLo using TCEAL6 antibody.. Secondary antibody was diluted at 1:20000