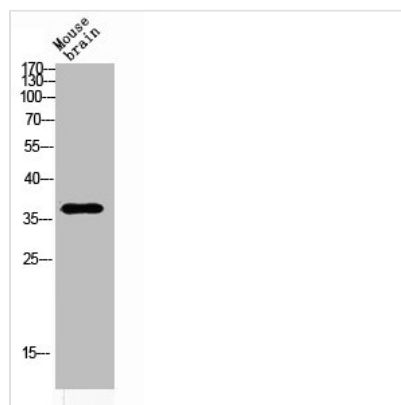




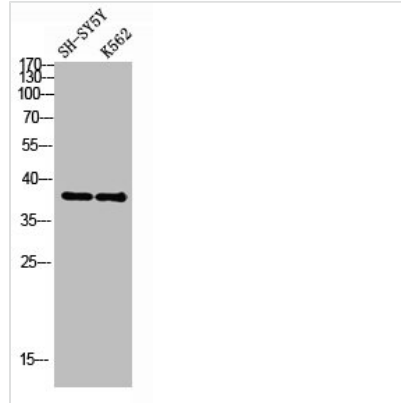
ART1 Antibody

Product Code	CSB-PA302605
Storage	Upon receipt, store at -20°C or -80°C. Avoid repeated freeze.
Uniprot No.	P52961
Immunogen	Synthesized peptide derived from the Internal region of Human CD296.
Raised In	Rabbit
Species Reactivity	Human
Tested Applications	WB, ELISA; WB:1:500-1:2000, ELISA:1:10000
Form	Liquid
Conjugate	Non-conjugated
Storage Buffer	Liquid in PBS containing 50% glycerol, 0.5% BSA and 0.02% sodium azide.
Purification Method	The antibody was affinity-purified from rabbit antiserum by affinity-chromatography using epitope-specific immunogen.
Alias	ART1; GPI-linked NAD(P)(+)-arginine ADP-ribosyltransferase 1; ADP-ribosyltransferase C2 and C3 toxin-like 1; ARTC1; Mono(ADP-ribosyl)transferase 1; CD296
Immunogen Species	Homo sapiens (Human)
Target Names	ART1

Image



Western blot analysis of MOUSE-BRAIN lysis using ART1 antibody. Antibody was diluted at 1:2000. Secondary antibody was diluted at 1:20000



Western Blot analysis of various cells using Antibody diluted at 1:1000. Secondary antibody was diluted at 1:20000

Usage

For Research Use Only. Not for use in diagnostic or therapeutic procedures.