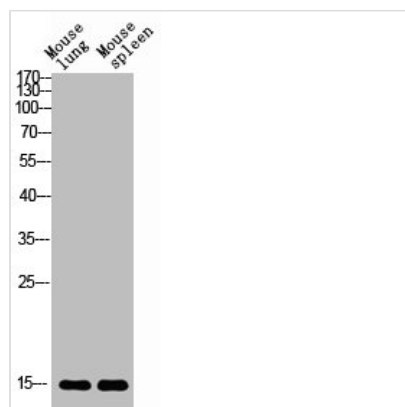




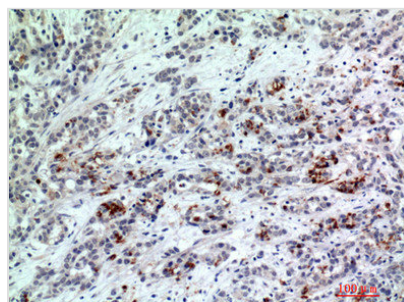
BATF3 Antibody

Product Code	CSB-PA344549
Storage	Upon receipt, store at -20°C or -80°C. Avoid repeated freeze.
Uniprot No.	Q9NR55
Immunogen	Synthesized peptide derived from the Internal region of Human BATF3.
Raised In	Rabbit
Species Reactivity	Human,Mouse,Rat
Tested Applications	WB, IHC, ELISA; WB:1:500-1:2000, IHC:1:100-1:300, ELISA:1:10000
Form	Liquid
Conjugate	Non-conjugated
Storage Buffer	Liquid in PBS containing 50% glycerol, 0.5% BSA and 0.02% sodium azide.
Purification Method	The antibody was affinity-purified from rabbit antiserum by affinity-chromatography using epitope-specific immunogen.
Alias	BATF3; SNFT; Basic leucine zipper transcriptional factor ATF-like 3; B-ATF-3; 21 kDa small nuclear factor isolated from T-cells; Jun dimerization protein p21SNFT
Immunogen Species	Homo sapiens (Human)
Target Names	BATF3

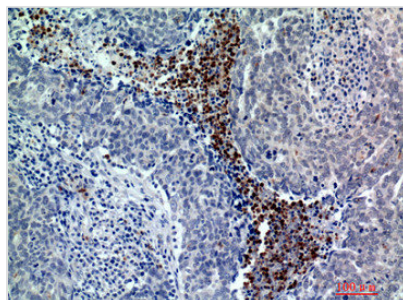
Image



Western blot analysis of mouse-lung mouse-spleen lysis using BATF3 antibody. Antibody was diluted at 1:2000. Secondary antibody was diluted at 1:20000



Immunohistochemical analysis of paraffin-embedded human-breast-cancer, antibody was diluted at 1:200



Immunohistochemical analysis of paraffin-embedded human-breast-cancer, antibody was diluted at 1:200