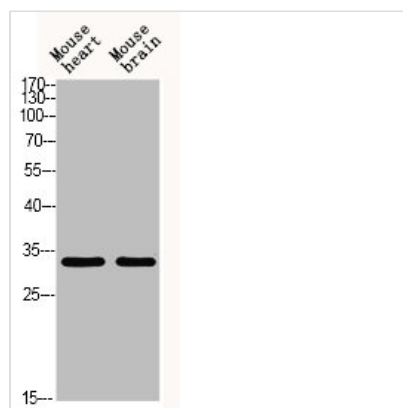




Acetyl-TAL1/2 (Lys221/222,Lys36/37) Antibody

Product Code	CSB-PA916100
Storage	Upon receipt, store at -20°C or -80°C. Avoid repeated freeze.
Uniprot No.	P17542
Immunogen	Synthesized peptide derived from Human TAL1/2 around the acetylation site of K221.
Raised In	Rabbit
Species Reactivity	Human,Mouse,Rat
Tested Applications	WB, ELISA; WB:1:500-1:2000, ELISA:1:10000
Form	Liquid
Conjugate	Non-conjugated
Storage Buffer	Liquid in PBS containing 50% glycerol, 0.5% BSA and 0.02% sodium azide.
Purification Method	The antibody was affinity-purified from rabbit antiserum by affinity-chromatography using epitope-specific immunogen.
Immunogen Species	Homo sapiens (Human)
Target Names	TAL1

Image



Western blot analysis of MOUSE-HEART
MOUSE-BRAIN using Acetyl-TAL1/2
(K221/K222/K36/K37) antibody. Antibody was
diluted at 1:500. Secondary antibody was diluted
at 1:20000