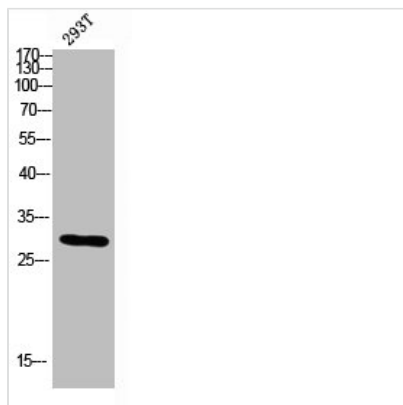




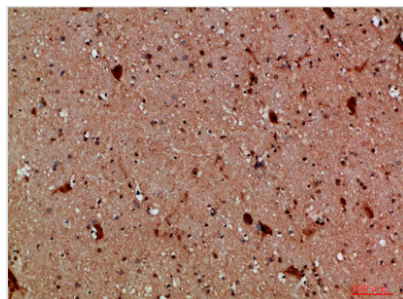
# CALB2 Antibody

|                            |   |
|----------------------------|---|
| <b>Product Code</b>        | CSB-PA485313  |
| <b>Storage</b>             | Upon receipt, store at -20°C or -80°C. Avoid repeated freeze.   |
| <b>Uniprot No.</b>         | P22676  |
| <b>Immunogen</b>           | Synthesized peptide derived from the Internal region of Human CALB2   |
| <b>Raised In</b>           | Rabbit  |
| <b>Species Reactivity</b>  | Human,Mouse,Rat   |
| <b>Tested Applications</b> | WB, ELISA; WB:1:500-1:2000, ELISA:1:10000   |
| <b>Form</b>                | Liquid  |
| <b>Conjugate</b>           | Non-conjugated  |
| <b>Storage Buffer</b>      | Liquid in PBS containing 50% glycerol, 0.5% BSA and 0.02% sodium azide.   |
| <b>Purification Method</b> | The antibody was affinity-purified from rabbit antiserum by affinity-chromatography using epitope-specific immunogen. |
| <b>Immunogen Species</b>   | Homo sapiens (Human)  |
| <b>Target Names</b>        | CALB2   |

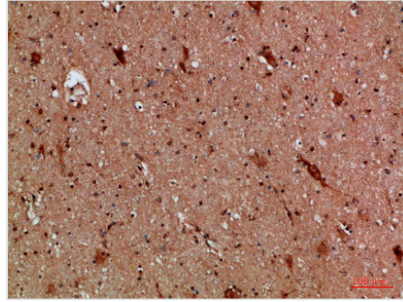
## Image



Western blot analysis of 293T lysis using CALB2 antibody. Antibody was diluted at 1:500. Secondary antibody was diluted at 1:20000



Immunohistochemical analysis of paraffin-embedded human-brain, antibody was diluted at 1:200



Immunohistochemical analysis of paraffin-embedded human-brain, antibody was diluted at 1:200

---

**Usage**

For Research Use Only. Not for use in diagnostic or therapeutic procedures.