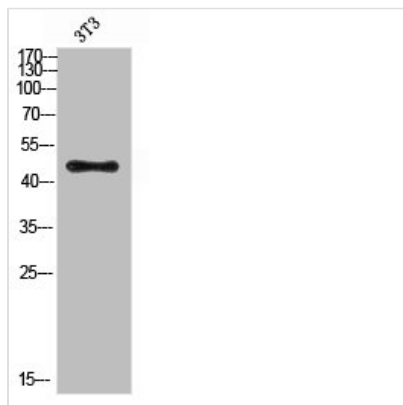




Acetyl-E2F3 (Lys168) Antibody

Product Code	CSB-PA770665
Storage	Upon receipt, store at -20°C or -80°C. Avoid repeated freeze.
Uniprot No.	O00716
Immunogen	Synthetic peptide from Human protein at AA range: 130-200
Raised In	Rabbit
Species Reactivity	Human,Mouse,Rat
Tested Applications	WB,ELISA;WB:1:500-10000,ELISA:1:10000
Form	Liquid
Conjugate	Non-conjugated
Storage Buffer	PBS, pH 7.4, containing 0.02% sodium azide as Preservative and 50% Glycerol.
Purification Method	The antibody was affinity-purified from rabbit serum by affinity-chromatography using specific immunogen.
Alias	E2F3 KIAA0075
Immunogen Species	Homo sapiens (Human)
Target Names	E2F3

Image



Western Blot analysis of 3T3 cells using Antibody diluted at 500. Secondary antibody was diluted at 1:20000

Usage

For Research Use Only. Not for use in diagnostic or therapeutic procedures.