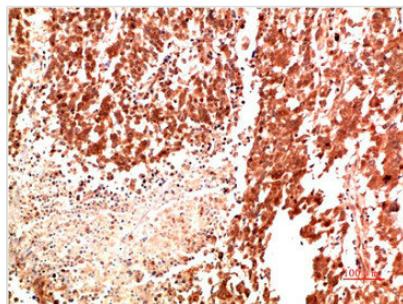




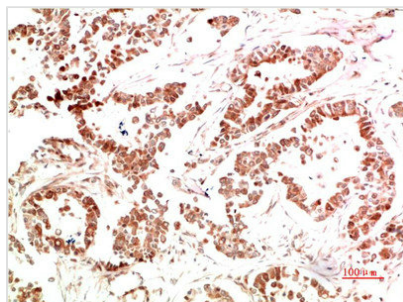
MET Antibody

Product Code	CSB-PA376125
Storage	Upon receipt, store at -20°C or -80°C. Avoid repeated freeze.
Uniprot No.	P08581
Immunogen	Recombinant Protein of Met of MET
Raised In	Rabbit
Species Reactivity	Human,Mouse,Rat
Tested Applications	IHC,ELISA;IHC:1:100-200
Form	Liquid
Conjugate	Non-conjugated
Storage Buffer	Liquid in PBS containing 50% glycerol, 0.5% BSA and 0.02% sodium azide.
Purification Method	The antibody was affinity-purified from rabbit antiserum by affinity-chromatography using epitope-specific immunogen.
Alias	MET
Immunogen Species	Homo sapiens (Human)
Target Names	MET

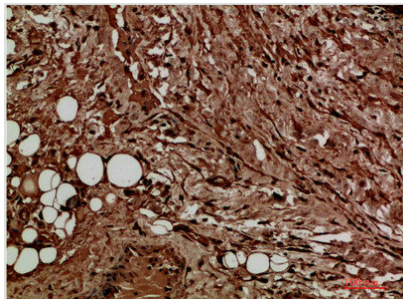
Image



Immunohistochemical analysis of paraffin-embedded Human Lung Carcinoma Tissue using Met Rabbit pAb diluted at 1:500.



Immunohistochemical analysis of paraffin-embedded Human Stomach Carcinoma Tissue using Met Rabbit pAb diluted at 1:500.



Immunohistochemical analysis of paraffin-embedded Human Liver Carcinoma Tissue using Met Rabbit pAb diluted at 1:500.

Usage

For Research Use Only. Not for use in diagnostic or therapeutic procedures.