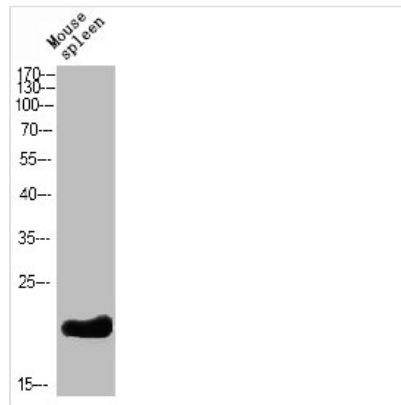




BCL2 Antibody

Product Code	CSB-PA703826
Storage	Upon receipt, store at -20°C or -80°C. Avoid repeated freeze.
Uniprot No.	P10415
Immunogen	Synthesized peptide derived from Bcl-2 . at AA range: 10-90
Raised In	Rabbit
Species Reactivity	Mouse,Rat
Tested Applications	WB,ELISA;WB:1:500-2000,ELISA:1:10000-20000
Form	Liquid
Conjugate	Non-conjugated
Storage Buffer	Liquid in PBS containing 50% glycerol, 0.5% BSA and 0.02% sodium azide.
Purification Method	The antibody was affinity-purified from rabbit antiserum by affinity-chromatography using epitope-specific immunogen.
Alias	B-cell CLL/lymphoma 2
Immunogen Species	Homo sapiens (Human)
Target Names	BCL2

Image



Western Blot analysis of mouse-spleen cells using Bcl-2 Polyclonal Antibody diluted at 1:500. Secondary antibody was diluted at 1:20000