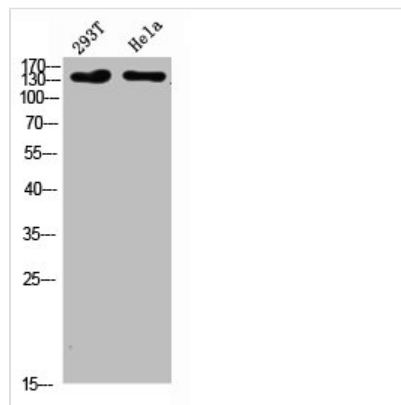




# COL1A2/COL1A1 Antibody

<b>Product Code</b>	CSB-PA164287
<b>Storage</b>	Upon receipt, store at -20°C or -80°C. Avoid repeated freeze.
<b>Uniprot No.</b>	P08123/P02452
<b>Immunogen</b>	Synthesized peptide derived from Collagen I . at AA range: 1200-1217
<b>Raised In</b>	Rabbit
<b>Species Reactivity</b>	Human,Mouse,Rat
<b>Tested Applications</b>	WB,ELISA;WB:1:500-2000,ELISA:1:10000-20000
<b>Form</b>	Liquid
<b>Conjugate</b>	Non-conjugated
<b>Storage Buffer</b>	Liquid in PBS containing 50% glycerol, 0.5% BSA and 0.02% sodium azide.
<b>Purification Method</b>	The antibody was affinity-purified from rabbit antiserum by affinity-chromatography using epitope-specific immunogen.
<b>Alias</b>	collagen, type I, alpha 2
<b>Immunogen Species</b>	Homo sapiens (Human)
<b>Target Names</b>	COL1A2/COL1A1

## Image



Western Blot analysis of 293T HeLa cells using Collagen I Polyclonal Antibody diluted at 1:500. Secondary antibody was diluted at 1:20000

## Usage

For Research Use Only. Not for use in diagnostic or therapeutic procedures.