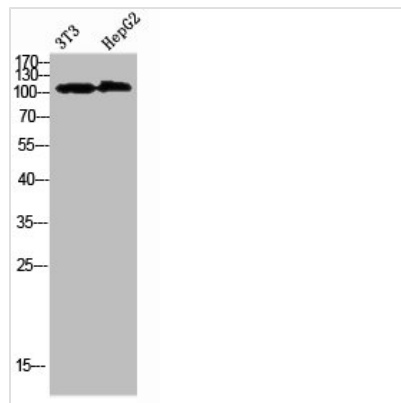




COL28A1 Antibody

| | |
|----------------------------|---|
| Product Code | CSB-PA276986 |
| Storage | Upon receipt, store at -20°C or -80°C. Avoid repeated freeze. |
| Uniprot No. | Q2UY09 |
| Immunogen | Synthesized peptide derived from Collagen alpha-1(XXVIII)Polyclonal Antibody at AA range: 111-160 |
| Raised In | Rabbit |
| Species Reactivity | Human,Mouse |
| Tested Applications | WB,ELISA;WB:1:500-2000,ELISA:1:10000-20000 |
| Form | Liquid |
| Conjugate | Non-conjugated |
| Storage Buffer | Liquid in PBS containing 50% glycerol, 0.5% BSA and 0.02% sodium azide. |
| Purification Method | The antibody was affinity-purified from rabbit antiserum by affinity-chromatography using epitope-specific immunogen. |
| Alias | Collagen alpha-1(XXVIII) chain |
| Immunogen Species | Homo sapiens (Human) |
| Target Names | COL28A1 |

Image



Western Blot analysis of 3T3 HEPG2 cells using Collagen alpha-1(XXVIII)Polyclonal Antibody diluted at 1:1000. Secondary antibody was diluted at 1:20000

Usage

For Research Use Only. Not for use in diagnostic or therapeutic procedures.