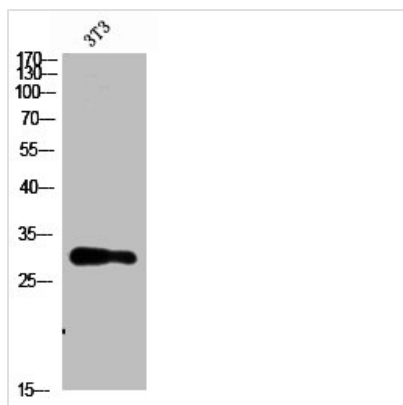




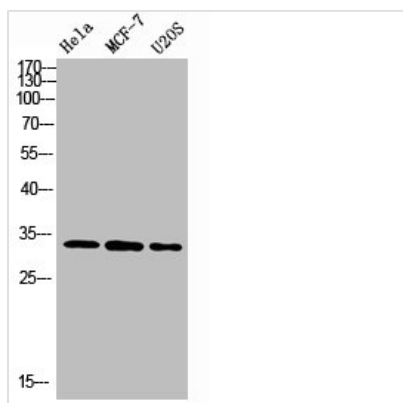
NANOS1 Antibody

Product Code	CSB-PA642015
Storage	Upon receipt, store at -20°C or -80°C. Avoid repeated freeze.
Uniprot No.	Q8WY41
Immunogen	Synthesized peptide derived from Nanos Homologue 1 (NANOS1) at AA range: 151-200
Raised In	Rabbit
Species Reactivity	Human
Tested Applications	WB,ELISA;WB:1:500-2000,ELISA:1:10000-20000
Form	Liquid
Conjugate	Non-conjugated
Storage Buffer	Liquid in PBS containing 50% glycerol, 0.5% BSA and 0.02% sodium azide.
Purification Method	The antibody was affinity-purified from rabbit antiserum by affinity-chromatography using epitope-specific immunogen.
Alias	Nanos homolog 1 (NOS-1) (EC_Rep1a)
Immunogen Species	Homo sapiens (Human)
Target Names	NANOS1

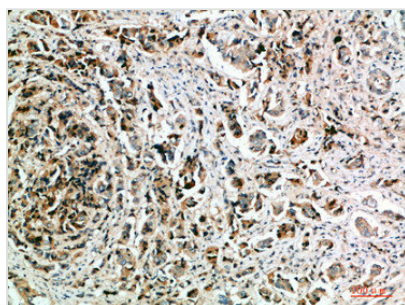
Image



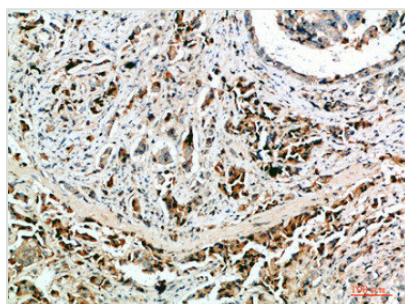
Western Blot analysis of 3T3 cells using Nanos Homologue 1 (NANOS1) Polyclonal Antibody diluted at 1:1500. Secondary antibody was diluted at 1:20000



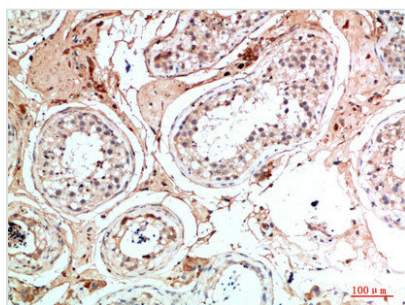
Western Blot analysis of various cells using Antibody diluted at 1:1000. Secondary antibody was diluted at 1:20000



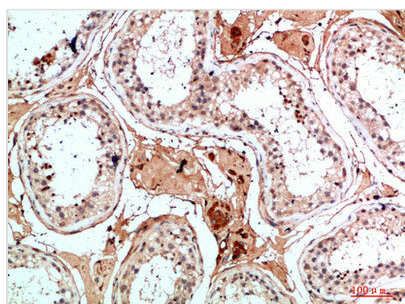
Immunohistochemical analysis of paraffin-embedded human-breast-cancer, antibody was diluted at 1:200



Immunohistochemical analysis of paraffin-embedded human-breast-cancer, antibody was diluted at 1:200



Immunohistochemical analysis of paraffin-embedded human-testis, antibody was diluted at 1:200



Immunohistochemical analysis of paraffin-embedded human-testis, antibody was diluted at 1:200

Usage

For Research Use Only. Not for use in diagnostic or therapeutic procedures.