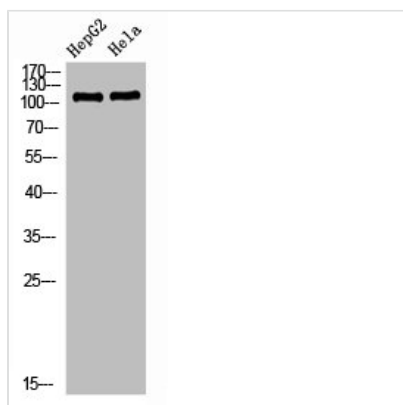




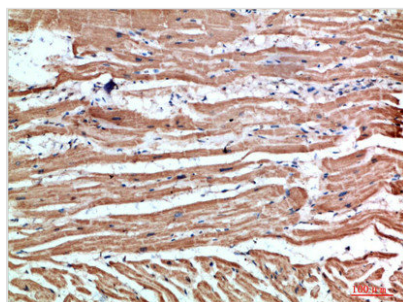
# NLRX1 Antibody

<b>Product Code</b>	CSB-PA770306
<b>Storage</b>	Upon receipt, store at -20°C or -80°C. Avoid repeated freeze.
<b>Uniprot No.</b>	Q86UT6
<b>Immunogen</b>	Synthesized peptide derived from NLRX1 at AA range: 581-630
<b>Raised In</b>	Rabbit
<b>Species Reactivity</b>	Human,Mouse,Rat
<b>Tested Applications</b>	WB,ELISA;WB:1:500-2000,ELISA:1:10000-20000
<b>Form</b>	Liquid
<b>Conjugate</b>	Non-conjugated
<b>Storage Buffer</b>	Liquid in PBS containing 50% glycerol, 0.5% BSA and 0.02% sodium azide.
<b>Purification Method</b>	The antibody was affinity-purified from rabbit antiserum by affinity-chromatography using epitope-specific immunogen.
<b>Alias</b>	NLR family member X1 (Caterpillar protein 11.3) (CLR11.3) (Nucleotide-binding oligomerization domain protein 26) (Nucleotide-binding oligomerization domain protein 5) (Nucleotide-binding oligomerization domain protein 9)
<b>Immunogen Species</b>	Homo sapiens (Human)
<b>Target Names</b>	NLRX1

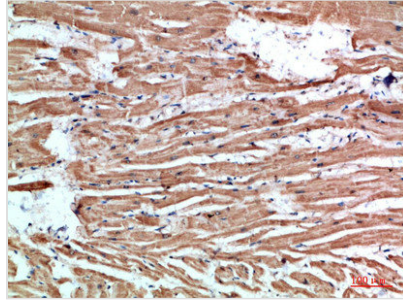
## Image



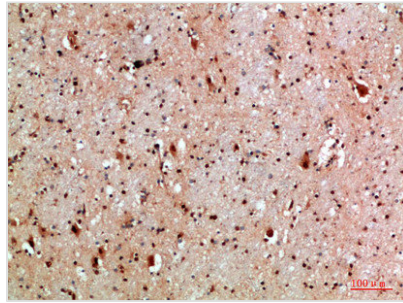
Western Blot analysis of HEPG2 HeLa cells using NLRX1 Polyclonal Antibody diluted at 1:1000. Secondary antibody was diluted at 1:20000



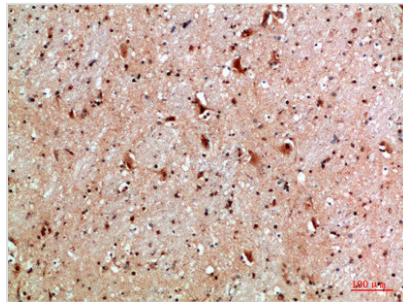
Immunohistochemical analysis of paraffin-embedded human-heart, antibody was diluted at 1:200



Immunohistochemical analysis of paraffin-embedded human-heart, antibody was diluted at 1:200



Immunohistochemical analysis of paraffin-embedded human-brain, antibody was diluted at 1:200



Immunohistochemical analysis of paraffin-embedded human-brain, antibody was diluted at 1:200

## Usage

For Research Use Only. Not for use in diagnostic or therapeutic procedures.