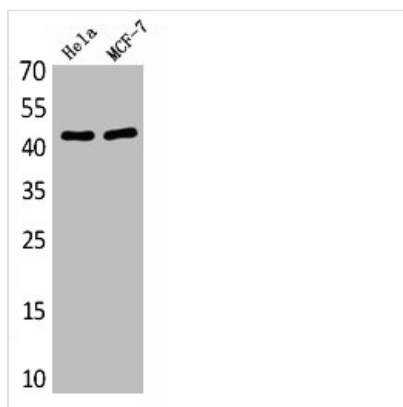




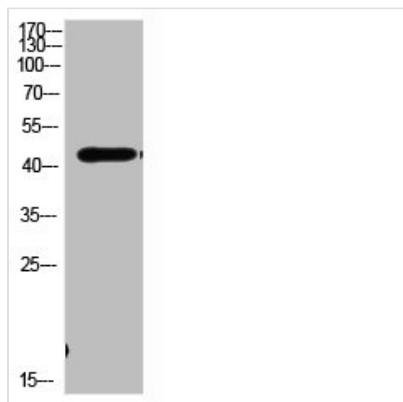
MAP2K1 Antibody

Product Code	CSB-PA146432
Storage	Upon receipt, store at -20°C or -80°C. Avoid repeated freeze.
Uniprot No.	Q02750
Immunogen	Synthetic peptide from Human protein at AA range: 330-410
Raised In	Rabbit
Species Reactivity	Human,Mouse,Rat
Tested Applications	WB,ELISA;WB:1:500-10000,ELISA:1:10000
Form	Liquid
Conjugate	Non-conjugated
Storage Buffer	Liquid in PBS containing 50% glycerol, 0.5% BSA and 0.02% sodium azide.
Purification Method	The antibody was affinity-purified from rabbit serum by affinity-chromatography using specific immunogen.
Alias	MAP2K1 MEK1 PRKMK1
Immunogen Species	Homo sapiens (Human)
Target Names	MAP2K1

Image



Western Blot analysis of various cells using Antibody diluted at 1:1000. Secondary antibody was diluted at 1:20000



Western Blot analysis of MOUSE-BRIAN cells using Antibody diluted at 1000. Secondary antibody was diluted at 1:20000



Usage

For Research Use Only. Not for use in diagnostic or therapeutic procedures.