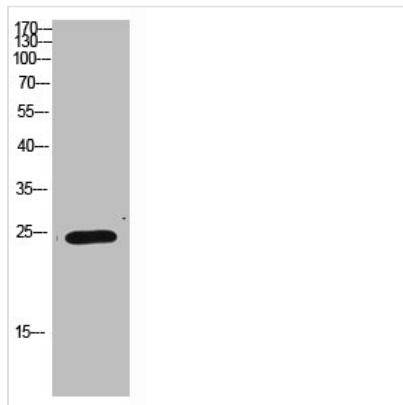




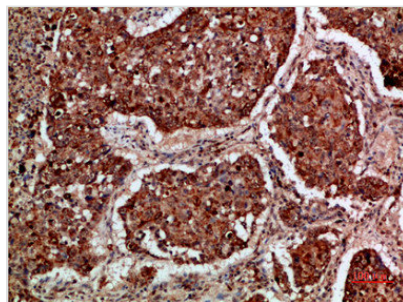
IMP3 Antibody

Product Code	CSB-PA290241
Storage	Upon receipt, store at -20°C or -80°C. Avoid repeated freeze.
Uniprot No.	Q9NV31
Immunogen	Synthetic peptide from Human protein at AA range: 135-184
Raised In	Rabbit
Species Reactivity	Human,Mouse,Rat
Tested Applications	WB,ELISA;WB:1:500-10000,ELISA:1:10000
Form	Liquid
Conjugate	Non-conjugated
Storage Buffer	Liquid in PBS containing 50% glycerol, 0.5% BSA and 0.02% sodium azide.
Purification Method	The antibody was affinity-purified from rabbit serum by affinity-chromatography using specific immunogen.
Alias	IMP3 C15orf12 MRPS4
Immunogen Species	Homo sapiens (Human)
Target Names	IMP3

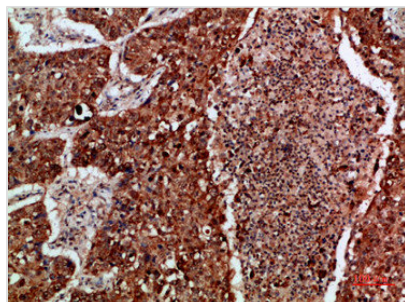
Image



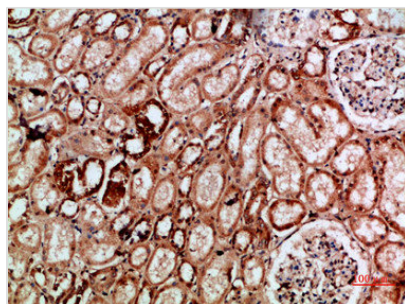
Western Blot analysis of HEPG2 cells using Antibody diluted at 1000. Secondary antibody was diluted at 1:20000



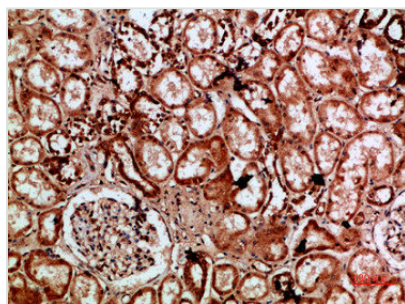
Immunohistochemical analysis of paraffin-embedded human-lung-cancer, antibody was diluted at 1:200



Immunohistochemical analysis of paraffin-embedded human-lung-cancer, antibody was diluted at 1:200



Immunohistochemical analysis of paraffin-embedded human-kidney, antibody was diluted at 1:200



Immunohistochemical analysis of paraffin-embedded human-kidney, antibody was diluted at 1:200

Usage

For Research Use Only. Not for use in diagnostic or therapeutic procedures.