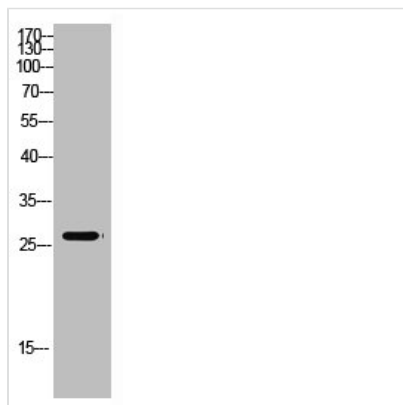




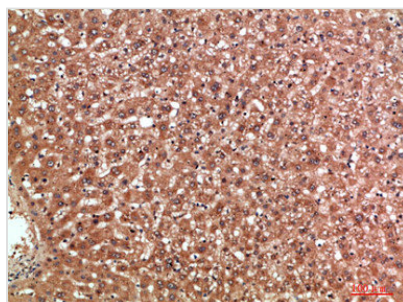
MBL2 Antibody

Product Code	CSB-PA222515
Storage	Upon receipt, store at -20°C or -80°C. Avoid repeated freeze.
Uniprot No.	P11226
Immunogen	Synthetic peptide from Human protein at AA range: 21-70
Raised In	Rabbit
Species Reactivity	Human,Mouse
Tested Applications	WB,ELISA;WB:1:500-10000,ELISA:1:10000
Form	Liquid
Conjugate	Non-conjugated
Storage Buffer	Liquid in PBS containing 50% glycerol, 0.5% BSA and 0.02% sodium azide.
Purification Method	The antibody was affinity-purified from rabbit serum by affinity-chromatography using specific immunogen.
Alias	MBL2 COLEC1 MBL
Immunogen Species	Homo sapiens (Human)
Target Names	MBL2

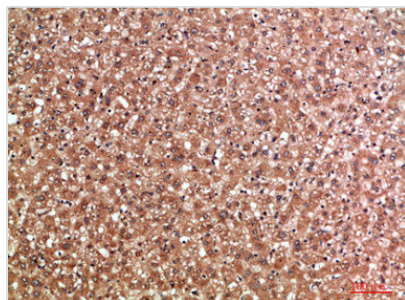
Image



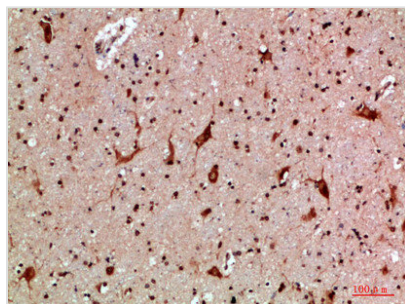
Western Blot analysis of mouse-kidney cells using Antibody diluted at 500. Secondary antibody was diluted at 1:20000



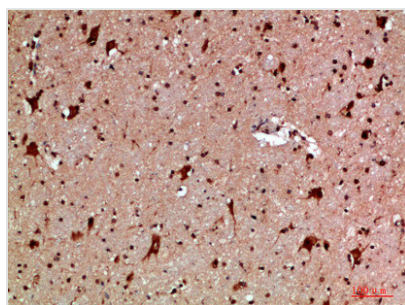
Immunohistochemical analysis of paraffin-embedded human-liver, antibody was diluted at 1:200



Immunohistochemical analysis of paraffin-embedded human-liver, antibody was diluted at 1:200



Immunohistochemical analysis of paraffin-embedded human-brain, antibody was diluted at 1:200



Immunohistochemical analysis of paraffin-embedded human-brain, antibody was diluted at 1:200

Usage

For Research Use Only. Not for use in diagnostic or therapeutic procedures.