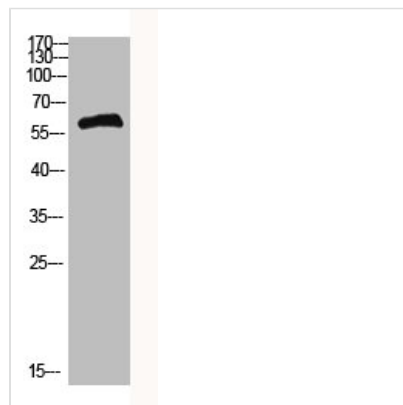




COL25A1 Antibody

Product Code	CSB-PA930624
Storage	Upon receipt, store at -20°C or -80°C. Avoid repeated freeze.
Uniprot No.	Q9BXS0
Immunogen	Synthetic peptide from Human protein at AA range: 101-150
Raised In	Rabbit
Species Reactivity	Human, Mouse
Tested Applications	WB, ELISA; WB: 1:500-10000, ELISA: 1:10000
Form	Liquid
Conjugate	Non-conjugated
Storage Buffer	Liquid in PBS containing 50% glycerol, 0.5% BSA and 0.02% sodium azide.
Purification Method	The antibody was affinity-purified from rabbit serum by affinity-chromatography using specific immunogen.
Alias	COL25A1
Immunogen Species	Homo sapiens (Human)
Target Names	COL25A1

Image



Western Blot analysis of HEPG2 cells using Antibody diluted at 500. Secondary antibody was diluted at 1:20000

Usage

For Research Use Only. Not for use in diagnostic or therapeutic procedures.