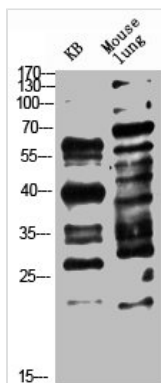




Pan myristoylation Antibody

| | |
|----------------------------|---|
| Product Code | CSB-PA465729 |
| Storage | Upon receipt, store at -20°C or -80°C. Avoid repeated freeze. |
| Immunogen | Synthetic myristoylated peptide |
| Raised In | Rabbit |
| Species Reactivity | ALL |
| Tested Applications | WB,ELISA;WB:1:500-10000,ELISA:1:10000 |
| Form | Liquid |
| Conjugate | Non-conjugated |
| Storage Buffer | PBS, pH 7.4, containing 0.02% sodium azide as Preservative and 50% Glycerol. |
| Purification Method | The antibody was affinity-purified from rabbit serum by affinity-chromatography using specific immunogen. |

Image



Western Blot analysis of KB, MOUSE-LUNG cells using Antibody diluted at 1000. Secondary antibody was diluted at 1:20000