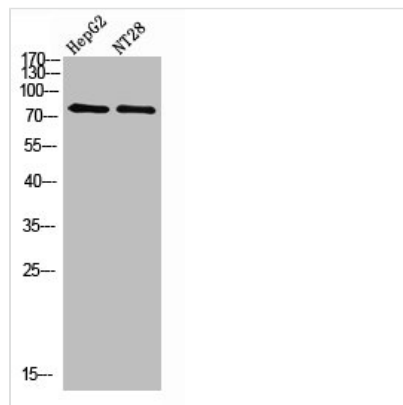




RPS6KA2 Antibody

Product Code	CSB-PA842072
Storage	Upon receipt, store at -20°C or -80°C. Avoid repeated freeze.
Uniprot No.	Q15349
Immunogen	Synthetic peptide from Human protein at AA range: 330-400
Raised In	Rabbit
Species Reactivity	Human, Mouse
Tested Applications	WB, ELISA; WB: 1:500-10000, ELISA: 1:10000
Form	Liquid
Conjugate	Non-conjugated
Storage Buffer	Liquid in PBS containing 50% glycerol, 0.5% BSA and 0.02% sodium azide.
Purification Method	The antibody was affinity-purified from rabbit serum by affinity-chromatography using specific immunogen.
Alias	RPS6KA2 MAPKAPK1C RSK3
Immunogen Species	Homo sapiens (Human)
Target Names	RPS6KA2

Image



Western Blot analysis of hepg2, NT28 cells using Antibody diluted at 500. Secondary antibody was diluted at 1:20000

Usage

For Research Use Only. Not for use in diagnostic or therapeutic procedures.