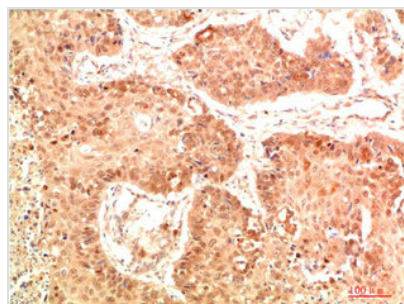




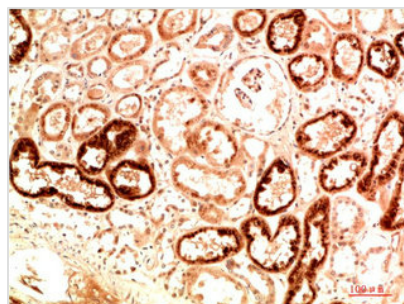
# NFE2L2 Antibody

<b>Product Code</b>	CSB-PA777170
<b>Storage</b>	Upon receipt, store at -20°C or -80°C. Avoid repeated freeze.
<b>Uniprot No.</b>	Q16236
<b>Immunogen</b>	Recombinant Protein of Nrf2
<b>Raised In</b>	Rabbit
<b>Species Reactivity</b>	Human,Mouse,Rat
<b>Tested Applications</b>	IHC,ELISA;IHC:1:50-200
<b>Form</b>	Liquid
<b>Conjugate</b>	Non-conjugated
<b>Storage Buffer</b>	Liquid in PBS containing 50% glycerol, 0.5% BSA and 0.02% sodium azide.
<b>Purification Method</b>	The antibody was affinity-purified from rabbit serum by affinity-chromatography using specific immunogen.
<b>Alias</b>	Nuclear factor erythroid 2-related factor 2 (NF-E2-related factor 2) (NFE2-related factor 2) (HEBP1) (Nuclear factor, erythroid derived 2, like 2)
<b>Immunogen Species</b>	Homo sapiens (Human)
<b>Target Names</b>	NFE2L2

## Image



Immunohistochemical analysis of paraffin-embedded Human Lung Carcinoma Tissue using Nrf2 Rabbit pAb diluted at 1:500



Immunohistochemical analysis of paraffin-embedded Human Kidney Tissue using Nrf2 Rabbit pAb diluted at 1:500

## Usage

For Research Use Only. Not for use in diagnostic or therapeutic procedures.