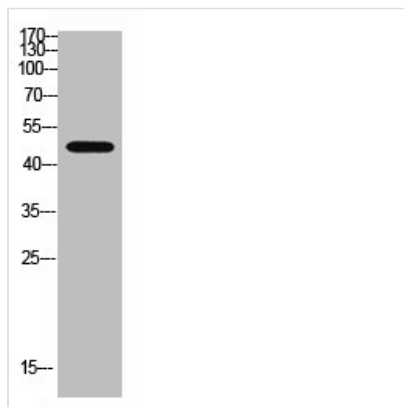




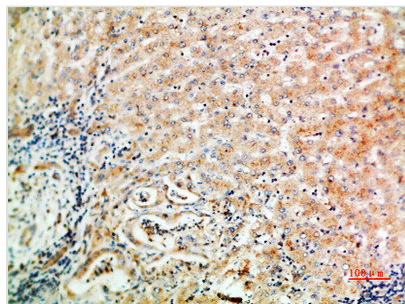
WISP3 Antibody

Product Code	CSB-PA215921
Storage	Upon receipt, store at -20°C or -80°C. Avoid repeated freeze.
Uniprot No.	O95389
Immunogen	Synthetic peptide from Human protein at AA range: 1-50
Raised In	Rabbit
Species Reactivity	Human
Tested Applications	WB,ELISA;WB:1:500-2000,ELISA:1:10000-20000
Form	Liquid
Conjugate	Non-conjugated
Storage Buffer	PBS, pH 7.4, containing 0.02% sodium azide as Preservative and 50% Glycerol.
Purification Method	The antibody was affinity-purified from rabbit serum by affinity-chromatography using specific immunogen.
Alias	WNT1-inducible-signaling pathway protein 3 (WISP-3) (CCN family member 6)
Immunogen Species	Homo sapiens (Human)
Target Names	WISP3

Image



Western blot analysis of Hela Cell Lysate using antibody. Secondary antibody was diluted at 1:20000



Immunohistochemical analysis of paraffin-embedded human-liver-cancer, antibody was diluted at 1:200