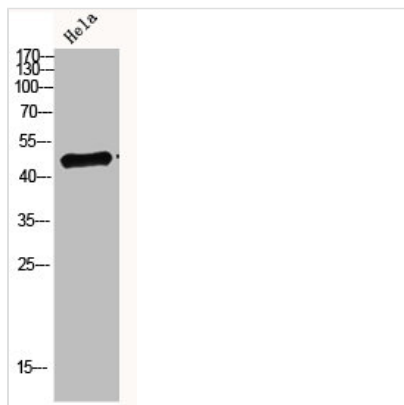




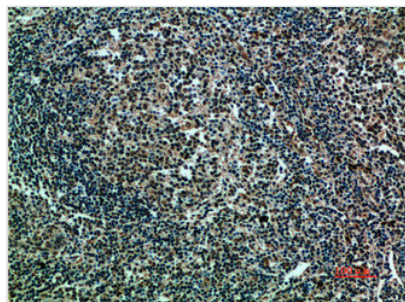
IRF3 Antibody

| | |
|----------------------------|---|
| Product Code | CSB-PA952191 |
| Storage | Upon receipt, store at -20°C or -80°C. Avoid repeated freeze. |
| Uniprot No. | Q14653 |
| Immunogen | Synthetic peptide from Human protein at AA range: 1268-1341 |
| Raised In | Rabbit |
| Species Reactivity | Human |
| Tested Applications | IHC,ELISA;IHC:1:50-1:300,ELISA:1:5000-1:20000 |
| Form | Liquid |
| Conjugate | Non-conjugated |
| Storage Buffer | Liquid in PBS containing 50% glycerol, 0.5% BSA and 0.02% sodium azide. |
| Purification Method | The antibody was affinity-purified from rabbit serum by affinity-chromatography using specific immunogen. |
| Alias | Interferon regulatory factor 3 (IRF-3) |
| Immunogen Species | Homo sapiens (Human) |
| Target Names | IRF3 |

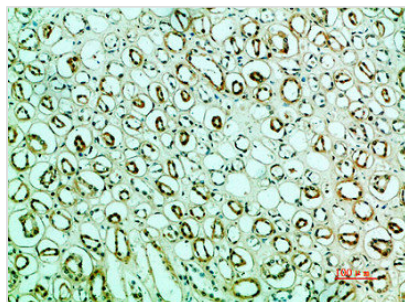
Image



Western blot analysis of hela Cell Lysate, antibody was diluted at 1:1000. Secondary antibody was diluted at 1:20000



Immunohistochemical analysis of paraffin-embedded human-tonsils, antibody was diluted at 1:200



Immunohistochemical analysis of paraffin-embedded human-kidney, antibody was diluted at 1:200

Usage

For Research Use Only. Not for use in diagnostic or therapeutic procedures.