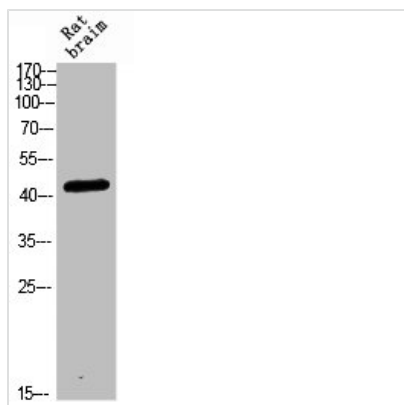




CRHR2 Antibody

Product Code	CSB-PA350000
Storage	Upon receipt, store at -20°C or -80°C. Avoid repeated freeze.
Uniprot No.	Q13324
Immunogen	Synthetic peptide from Human protein at AA range: 1268-1341
Raised In	Rabbit
Species Reactivity	Human,Rat
Tested Applications	WB,ELISA;WB:1:500-1:2000,ELISA:1:5000-1:20000
Form	Liquid
Conjugate	Non-conjugated
Storage Buffer	Liquid in PBS containing 50% glycerol, 0.5% BSA and 0.02% sodium azide.
Purification Method	The antibody was affinity-purified from rabbit serum by affinity-chromatography using specific immunogen.
Alias	Corticotropin-releasing factor receptor 2 (CRF-R-2) (CRF-R2) (CRFR-2) (Corticotropin-releasing hormone receptor 2) (CRH-R-2) (CRH-R2)
Immunogen Species	Homo sapiens (Human)
Target Names	CRHR2

Image



Western blot analysis of RAT-BRAIN Cell Lysate, antibody was diluted at 1:1000. Secondary antibody was diluted at 1:20000

Usage

For Research Use Only. Not for use in diagnostic or therapeutic procedures.