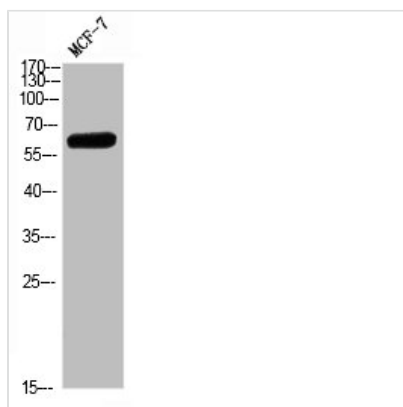




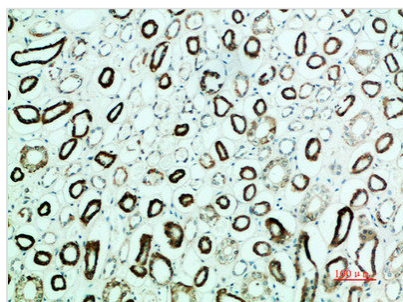
PTH1R Antibody

Product Code	CSB-PA440946
Storage	Upon receipt, store at -20°C or -80°C. Avoid repeated freeze.
Uniprot No.	Q03431
Immunogen	Synthetic peptide from Human protein at AA range: 1268-1341
Raised In	Rabbit
Species Reactivity	Human
Tested Applications	WB, IHC, ELISA; WB:1:500-1:2000, IHC:1:50-1:300, ELISA:1:5000-1:20000
Form	Liquid
Conjugate	Non-conjugated
Storage Buffer	Liquid in PBS containing 50% glycerol, 0.5% BSA and 0.02% sodium azide.
Purification Method	The antibody was affinity-purified from rabbit serum by affinity-chromatography using specific immunogen.
Alias	Parathyroid hormone/parathyroid hormone-related peptide receptor (PTH/PTHrP type I receptor) (PTH/PTHr receptor) (Parathyroid hormone 1 receptor) (PTH1 receptor)
Immunogen Species	Homo sapiens (Human)
Target Names	PTH1R

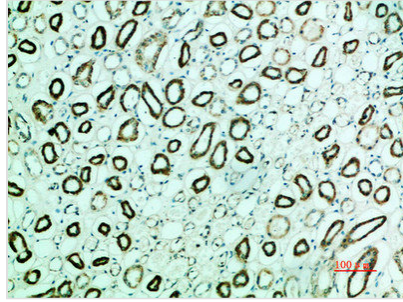
Image



Western blot analysis of MCF7 Cell Lysate, antibody was diluted at 1:1000. Secondary antibody was diluted at 1:20000



Immunohistochemical analysis of paraffin-embedded human-kidney, antibody was diluted at 1:200



Immunohistochemical analysis of paraffin-embedded human-kidney, antibody was diluted at 1:200

Usage

For Research Use Only. Not for use in diagnostic or therapeutic procedures.