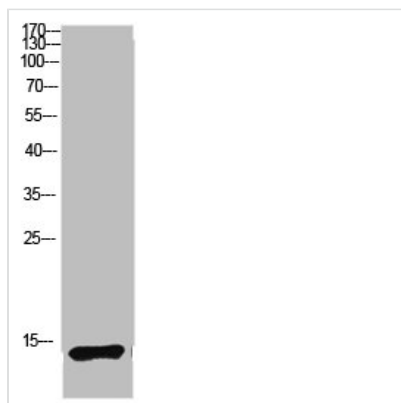




MAP1LC3B Antibody

Product Code	CSB-PA801588
Storage	Upon receipt, store at -20°C or -80°C. Avoid repeated freeze.
Uniprot No.	Q9GZQ8
Immunogen	Synthetic peptide from Human protein at AA range: 1-50
Raised In	Rabbit
Species Reactivity	Human,Mouse,Rat
Tested Applications	WB,ELISA;WB:1:500-2000,ELISA:1:10000-20000
Form	Liquid
Conjugate	Non-conjugated
Storage Buffer	PBS, pH 7.4, containing 0.02% sodium azide as Preservative and 50% Glycerol.
Purification Method	The antibody was affinity-purified from rabbit serum by affinity-chromatography using specific immunogen.
Alias	Microtubule-associated proteins 1A/1B light chain 3B (Autophagy-related protein LC3 B) (Autophagy-related ubiquitin-like modifier LC3 B) (MAP1 light chain 3-like protein 2) (MAP1A/MAP1B light chain 3 B) (MAP1A/MAP1B LC3 B) (Microtubule-associated protein 1 light chain 3 beta)
Immunogen Species	Homo sapiens (Human)
Target Names	MAP1LC3B

Image



Western blot analysis of mouse lung lysate, antibody was diluted at 1:1000. Secondary antibody was diluted at 1:20000