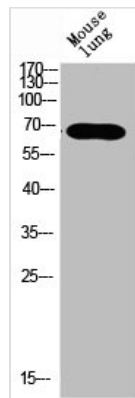




KRT Antibody

Product Code	CSB-PA674907
Storage	Upon receipt, store at -20°C or -80°C. Avoid repeated freeze.
Uniprot No.	P35908/Q01546/P12035/P13647/P02538/P04259/P48668/Q3SY84/Q14CN4/Q86Y46/Q7RTS7/O95678/Q5XKE5/P08729/P05787/Q9NSB2
Immunogen	Synthetic peptide from Human protein at AA range: 150-220
Raised In	Rabbit
Species Reactivity	Human,Mouse,Rat
Tested Applications	WB,ELISA;WB:1:500-2000,ELISA:1:10000-20000
Form	Liquid
Conjugate	Non-conjugated
Storage Buffer	PBS, pH 7.4, containing 0.02% sodium azide as Preservative and 50% Glycerol.
Purification Method	The antibody was affinity-purified from rabbit serum by affinity-chromatography using specific immunogen.
Immunogen Species	Homo sapiens (Human)
Target Names	KRT2/KRT76/KRT3/KRT5/KRT6A/KRT6B/KRT6C/KRT71/KRT72/KRT73/KRT74/KRT75/KRT79/KRT7/KRT8/KRT84

Image



Western blot analysis of mouse-lung mouse-brain mouse-kidney mouse-heart lysate, antibody was diluted at 500. Secondary antibody was diluted at 1:20000