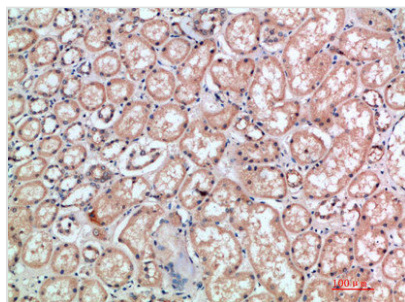




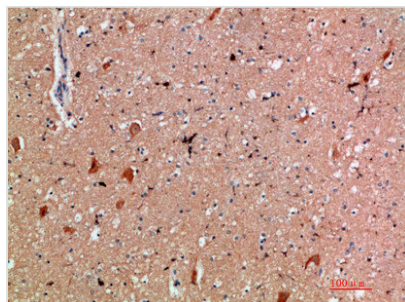
CD300E Antibody

Product Code	CSB-PA405404
Storage	Upon receipt, store at -20°C or -80°C. Avoid repeated freeze.
Uniprot No.	Q496F6
Immunogen	Synthetic peptide from Human protein at AA range: 31-80
Raised In	Rabbit
Species Reactivity	Human
Tested Applications	IHC,ELISA;IHC:1:50-300,ELISA:1:10000-20000
Form	Liquid
Conjugate	Non-conjugated
Storage Buffer	Liquid in PBS containing 50% glycerol, 0.5% BSA and 0.02% sodium azide.
Purification Method	The antibody was affinity-purified from rabbit serum by affinity-chromatography using specific immunogen.
Alias	CMRF35-like molecule 2 (CLM-2) (CD300 antigen-like family member E) (CMRF35-A5) (Immune receptor expressed on myeloid cells 2) (IREM-2) (Polymeric immunoglobulin receptor 2) (PIgR-2) (PIgR2) (Poly-Ig receptor 2) (CD antigen CD300e)
Immunogen Species	Homo sapiens (Human)
Target Names	CD300E

Image



Immunohistochemical analysis of paraffin-embedded human-kidney, antibody was diluted at 1:200



Immunohistochemical analysis of paraffin-embedded human-brain, antibody was diluted at 1:200

Usage

For Research Use Only. Not for use in diagnostic or therapeutic procedures.