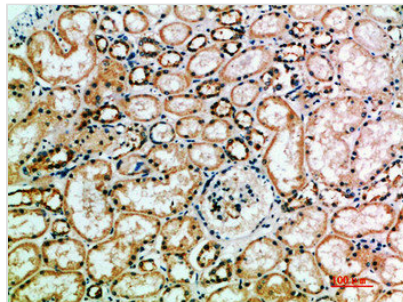




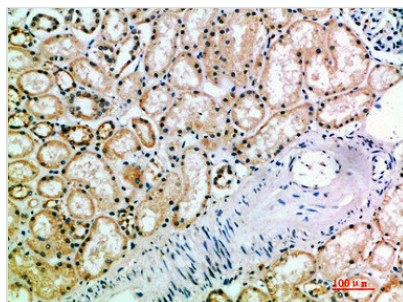
KIR3DL2 Antibody

| | |
|----------------------------|--|
| Product Code | CSB-PA497699 |
| Storage | Upon receipt, store at -20°C or -80°C. Avoid repeated freeze. |
| Uniprot No. | P43630 |
| Immunogen | Synthetic peptide from Human protein at AA range: 221-270 |
| Raised In | Rabbit |
| Species Reactivity | Human |
| Tested Applications | IHC,ELISA;IHC:1:50-300,ELISA:1:10000-20000 |
| Form | Liquid |
| Conjugate | Non-conjugated |
| Storage Buffer | Liquid in PBS containing 50% glycerol, 0.5% BSA and 0.02% sodium azide. |
| Purification Method | The antibody was affinity-purified from rabbit serum by affinity-chromatography using specific immunogen. |
| Alias | Killer cell immunoglobulin-like receptor 3DL2 (CD158 antigen-like family member K) (MHC class I NK cell receptor) (Natural killer-associated transcript 4) (NKAT-4) (p70 natural killer cell receptor clone CL-5) (p70 NK receptor CL-5) (CD antigen CD158k) |
| Immunogen Species | Homo sapiens (Human) |
| Target Names | KIR3DL2 |

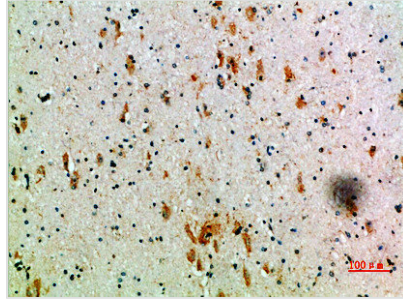
Image



Immunohistochemical analysis of paraffin-embedded human-kidney, antibody was diluted at 1:200



Immunohistochemical analysis of paraffin-embedded human-kidney, antibody was diluted at 1:200



Immunohistochemical analysis of paraffin-embedded human-brain, antibody was diluted at 1:200

Usage

For Research Use Only. Not for use in diagnostic or therapeutic procedures.