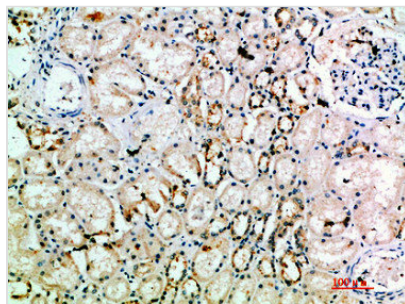




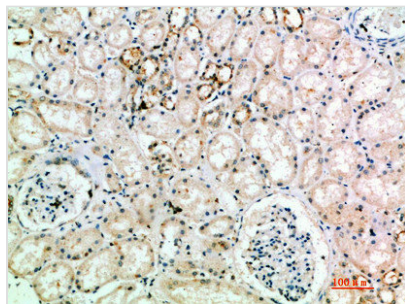
L1CAM Antibody

Product Code	CSB-PA266419
Storage	Upon receipt, store at -20°C or -80°C. Avoid repeated freeze.
Uniprot No.	P32004
Immunogen	Synthetic peptide from Human protein at AA range: 151-200
Raised In	Rabbit
Species Reactivity	Human,Mouse,Rat
Tested Applications	IHC,ELISA;IHC:1:50-300,ELISA:1:10000-20000
Form	Liquid
Conjugate	Non-conjugated
Storage Buffer	Liquid in PBS containing 50% glycerol, 0.5% BSA and 0.02% sodium azide.
Purification Method	The antibody was affinity-purified from rabbit serum by affinity-chromatography using specific immunogen.
Alias	Neural cell adhesion molecule L1 (N-CAM-L1) (NCAM-L1) (CD antigen CD171)
Immunogen Species	Homo sapiens (Human)
Target Names	L1CAM

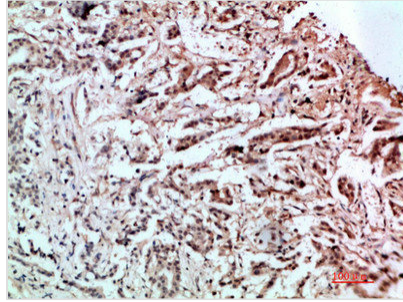
Image



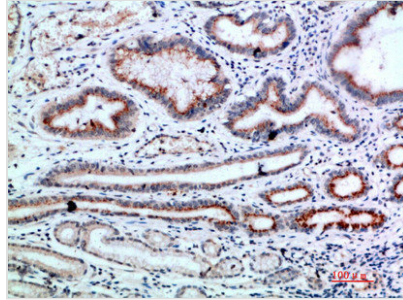
Immunohistochemical analysis of paraffin-embedded human-kidney, antibody was diluted at 1:200



Immunohistochemical analysis of paraffin-embedded human-kidney, antibody was diluted at 1:200



Immunohistochemical analysis of paraffin-embedded human-stomach-cancer, antibody was diluted at 1:200



Immunohistochemical analysis of paraffin-embedded human-stomach-cancer, antibody was diluted at 1:200

Usage

For Research Use Only. Not for use in diagnostic or therapeutic procedures.