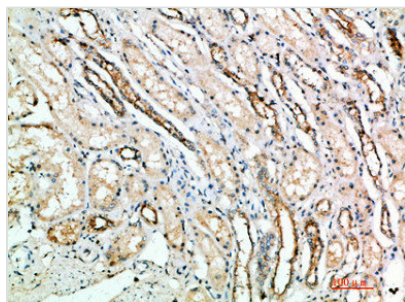




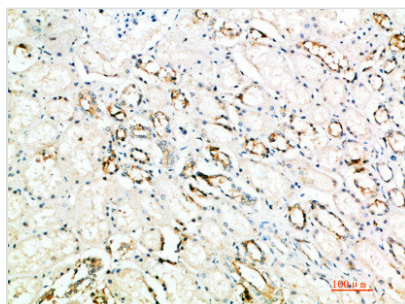
# ART4 Antibody

<b>Product Code</b>	CSB-PA373019
<b>Storage</b>	Upon receipt, store at -20°C or -80°C. Avoid repeated freeze.
<b>Uniprot No.</b>	Q93070
<b>Immunogen</b>	Synthetic peptide from Human protein at AA range: 181-230
<b>Raised In</b>	Rabbit
<b>Species Reactivity</b>	Human
<b>Tested Applications</b>	IHC,ELISA;IHC:1:50-300,ELISA:1:10000-20000
<b>Form</b>	Liquid
<b>Conjugate</b>	Non-conjugated
<b>Storage Buffer</b>	Liquid in PBS containing 50% glycerol, 0.5% BSA and 0.02% sodium azide.
<b>Purification Method</b>	The antibody was affinity-purified from rabbit serum by affinity-chromatography using specific immunogen.
<b>Alias</b>	Ecto-ADP-ribosyltransferase 4 (EC 2.4.2.31) (ADP-ribosyltransferase C2 and C3 toxin-like 4) (ARTC4) (Dombrock blood group carrier molecule) (Mono(ADP-ribosyl)transferase 4) (NAD(P)(+)-arginine ADP-ribosyltransferase 4) (CD antigen CD297)
<b>Immunogen Species</b>	Homo sapiens (Human)
<b>Target Names</b>	ART4

## Image



Immunohistochemical analysis of paraffin-embedded human-kidney, antibody was diluted at 1:200



Immunohistochemical analysis of paraffin-embedded human-kidney, antibody was diluted at 1:200

## Usage

For Research Use Only. Not for use in diagnostic or therapeutic procedures.