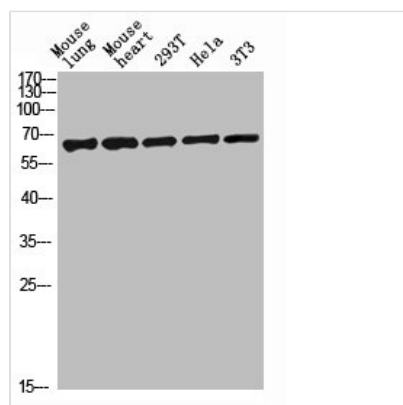




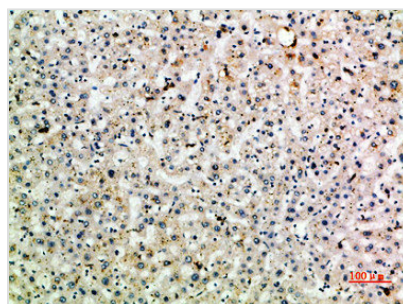
CLEC4M Antibody

Product Code	CSB-PA618551
Storage	Upon receipt, store at -20°C or -80°C. Avoid repeated freeze.
Uniprot No.	Q9H2X3
Immunogen	Synthetic peptide from Human protein at AA range: 271-320
Raised In	Rabbit
Species Reactivity	Human,Mouse,Rat
Tested Applications	WB, IHC, ELISA; WB:1:500-1:2000, IHC:1:100-1:300, ELISA:1:20000,
Form	Liquid
Conjugate	Non-conjugated
Storage Buffer	PBS, pH 7.4, containing 0.02% sodium azide as Preservative and 50% Glycerol.
Purification Method	The antibody was affinity-purified from rabbit serum by affinity-chromatography using specific immunogen.
Alias	C-type lectin domain family 4 member M (CD209 antigen-like protein 1) (DC-SIGN-related protein) (DC-SIGNR) (Dendritic cell-specific ICAM-3-grabbing non-integrin 2) (DC-SIGN2) (Liver/lymph node-specific ICAM-3-grabbing non-integrin) (L-SIGN) (CD antigen CD299)
Immunogen Species	Homo sapiens (Human)
Target Names	CLEC4M

Image



Western blot analysis of mouse-lung mouse-lung lysate, antibody was diluted at 2000. Secondary antibody was diluted at 1:20000



Immunohistochemical analysis of paraffin-embedded human-liver, antibody was diluted at 1:200