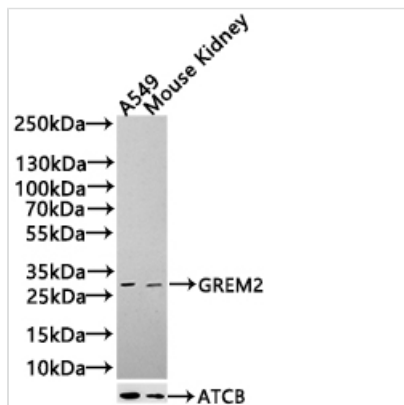




GREM2 Antibody

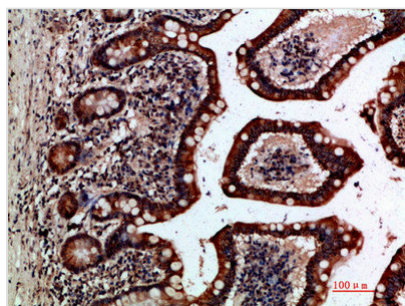
Product Code	CSB-PA107590
Storage	Upon receipt, store at -20°C or -80°C. Avoid repeated freeze.
Uniprot No.	Q9H772
Immunogen	Synthetic peptide from Human protein at AA range: 71-120
Raised In	Rabbit
Species Reactivity	Human,Mouse
Tested Applications	WB, IHC, ELISA; WB:1:500-1:2000, IHC:1:100-1:300, ELISA:1:20000,
Form	Liquid
Conjugate	Non-conjugated
Storage Buffer	Liquid in PBS containing 50% glycerol, 0.5% BSA and 0.02% sodium azide.
Purification Method	The antibody was affinity-purified from rabbit serum by affinity-chromatography using specific immunogen.
Product Type	Polyclonal Antibody
Immunogen Species	Homo sapiens (Human)
Target Names	GREM2

Image

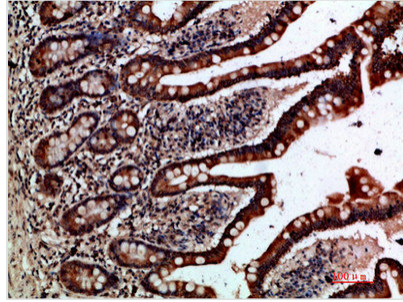


Western Blot

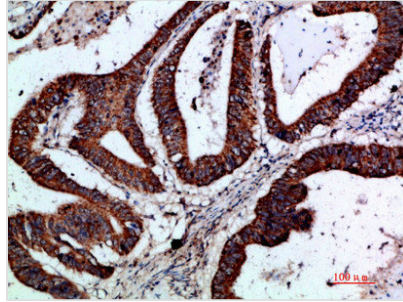
Positive WB detected in: A549 whole cell lysate(30µg), Mouse Kidney tissue lysate(30µg)
 All lanes: GREM2 antibody at 1:1000
 Secondary
 Goat polyclonal to rabbit IgG at 1/20000 dilution
 Predicted band size: 20 kDa
 Observed band size: 30 kDa
 Exposure time: 120s



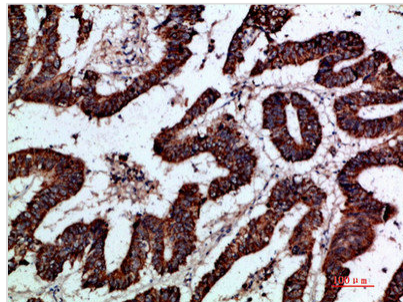
Immunohistochemical analysis of paraffin-embedded human-small-intestine, antibody was diluted at 1:200



Immunohistochemical analysis of paraffin-embedded human-small-intestine, antibody was diluted at 1:200



Immunohistochemical analysis of paraffin-embedded human-colon-cancer, antibody was diluted at 1:200



Immunohistochemical analysis of paraffin-embedded human-colon-cancer, antibody was diluted at 1:200

Usage

For Research Use Only. Not for use in diagnostic or therapeutic procedures.