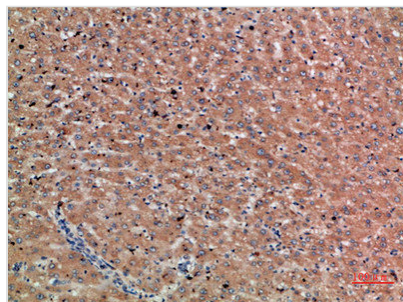




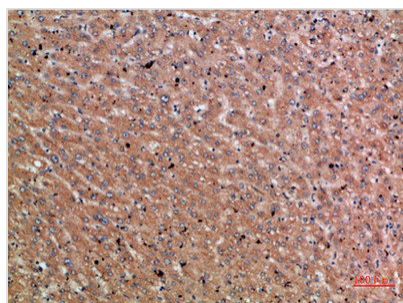
CHRD Antibody

Product Code	CSB-PA875601
Storage	Upon receipt, store at -20°C or -80°C. Avoid repeated freeze.
Uniprot No.	Q9H2X0
Immunogen	Synthetic peptide from Human protein at AA range: 905-954
Raised In	Rabbit
Species Reactivity	Human,Mouse,Rat
Tested Applications	IHC,ELISA;IHC:1:50-300,ELISA:1:10000-20000
Form	Liquid
Conjugate	Non-conjugated
Storage Buffer	PBS, pH 7.4, containing 0.02% sodium azide as Preservative and 50% Glycerol.
Purification Method	The antibody was affinity-purified from rabbit serum by affinity-chromatography using specific immunogen.
Alias	Chordin
Immunogen Species	Homo sapiens (Human)
Target Names	CHRD

Image



Immunohistochemical analysis of paraffin-embedded human-liver-cancer, antibody was diluted at 1:200



Immunohistochemical analysis of paraffin-embedded human-liver-cancer, antibody was diluted at 1:200