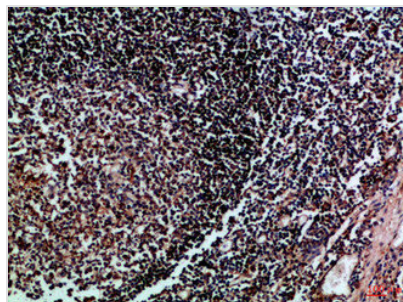




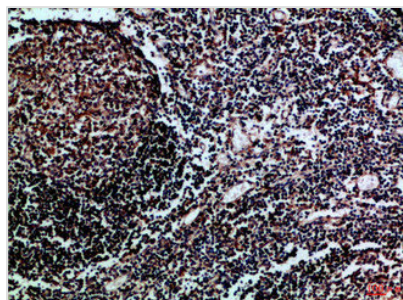
# HLA-DMB Antibody

<b>Product Code</b>	CSB-PA561724
<b>Storage</b>	Upon receipt, store at -20°C or -80°C. Avoid repeated freeze.
<b>Uniprot No.</b>	P28068
<b>Immunogen</b>	Synthetic peptide from Human protein at AA range: 40-100
<b>Raised In</b>	Rabbit
<b>Species Reactivity</b>	Human
<b>Tested Applications</b>	IHC,ELISA;IHC:1:50-300,ELISA:1:10000-20000
<b>Form</b>	Liquid
<b>Conjugate</b>	Non-conjugated
<b>Storage Buffer</b>	PBS, pH 7.4, containing 0.02% sodium azide as Preservative and 50% Glycerol.
<b>Purification Method</b>	The antibody was affinity-purified from rabbit serum by affinity-chromatography using specific immunogen.
<b>Alias</b>	HLA class II histocompatibility antigen, DM beta chain (MHC class II antigen DMB) (Really interesting new gene 7 protein)
<b>Immunogen Species</b>	Homo sapiens (Human)
<b>Target Names</b>	HLA-DMB

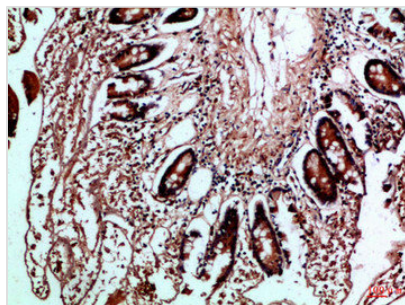
## Image



Immunohistochemical analysis of paraffin-embedded Human-tonsil, antibody was diluted at 1:100



Immunohistochemical analysis of paraffin-embedded Human-tonsil, antibody was diluted at 1:100



Immunohistochemical analysis of paraffin-embedded Human-colon, antibody was diluted at 1:100