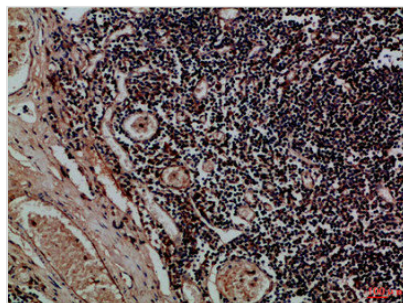




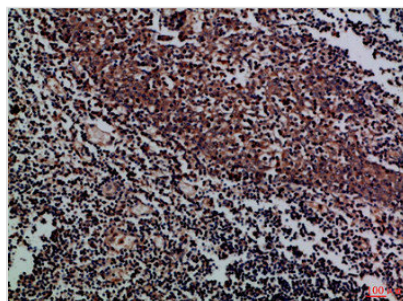
KIR2DL5A/KIR2DL5B Antibody

Product Code	CSB-PA499732
Storage	Upon receipt, store at -20°C or -80°C. Avoid repeated freeze.
Uniprot No.	Q8N109/Q8NHK3
Immunogen	Synthetic peptide from Human protein at AA range: 31-80
Raised In	Rabbit
Species Reactivity	Human
Tested Applications	IHC,ELISA;IHC:1:50-300,ELISA:1:10000-20000
Form	Liquid
Conjugate	Non-conjugated
Storage Buffer	PBS, pH 7.4, containing 0.02% sodium azide as Preservative and 50% Glycerol.
Purification Method	The antibody was affinity-purified from rabbit serum by affinity-chromatography using specific immunogen.
Immunogen Species	Homo sapiens (Human)
Target Names	KIR2DL5A/KIR2DL5B

Image



Immunohistochemical analysis of paraffin-embedded Human-tonsil, antibody was diluted at 1:100



Immunohistochemical analysis of paraffin-embedded Human-tonsil, antibody was diluted at 1:100