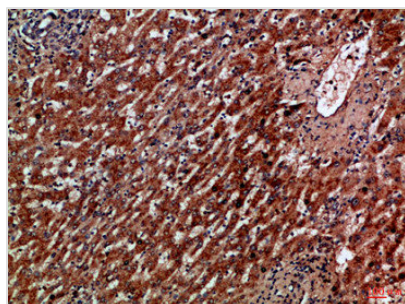




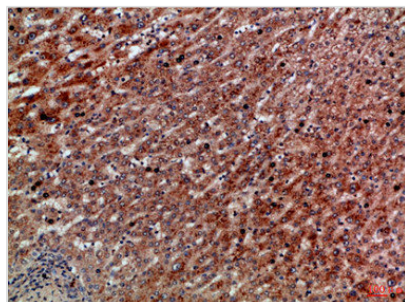
# CXCR1 Antibody

<b>Product Code</b>	CSB-PA821914
<b>Storage</b>	Upon receipt, store at -20°C or -80°C. Avoid repeated freeze.
<b>Uniprot No.</b>	P25024
<b>Immunogen</b>	Synthetic peptide from Human protein at AA range: 1-50
<b>Raised In</b>	Rabbit
<b>Species Reactivity</b>	Human
<b>Tested Applications</b>	IHC,ELISA;IHC:1:50-300,ELISA:1:10000-20000
<b>Form</b>	Liquid
<b>Conjugate</b>	Non-conjugated
<b>Storage Buffer</b>	Liquid in PBS containing 50% glycerol, 0.5% BSA and 0.02% sodium azide.
<b>Purification Method</b>	The antibody was affinity-purified from rabbit serum by affinity-chromatography using specific immunogen.
<b>Alias</b>	C-X-C chemokine receptor type 1 (CXC-R1) (CXCR-1) (CDw128a) (High affinity interleukin-8 receptor A) (IL-8R A) (IL-8 receptor type 1) (CD antigen CD181)
<b>Immunogen Species</b>	Homo sapiens (Human)
<b>Target Names</b>	CXCR1

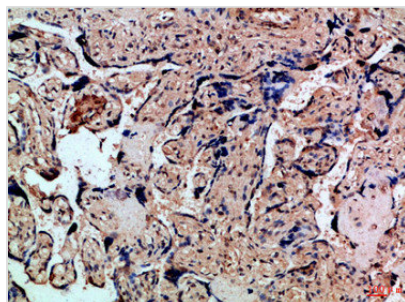
## Image



Immunohistochemical analysis of paraffin-embedded Human-liver-cancer, antibody was diluted at 1:100



Immunohistochemical analysis of paraffin-embedded Human-liver-cancer, antibody was diluted at 1:100



Immunohistochemical analysis of paraffin-embedded Human-placenta, antibody was diluted at 1:100

---

**Usage**

For Research Use Only. Not for use in diagnostic or therapeutic procedures.