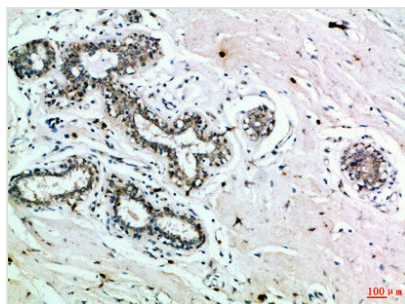




INSR Antibody

Product Code	CSB-PA410086
Storage	Upon receipt, store at -20°C or -80°C. Avoid repeated freeze.
Uniprot No.	P06213
Immunogen	Synthetic peptide from Human protein at AA range: 811-860
Raised In	Rabbit
Species Reactivity	Human
Tested Applications	IHC,ELISA;IHC:1:50-300,ELISA:1:10000-20000
Form	Liquid
Conjugate	Non-conjugated
Storage Buffer	Liquid in PBS containing 50% glycerol, 0.5% BSA and 0.02% sodium azide.
Purification Method	The antibody was affinity-purified from rabbit serum by affinity-chromatography using specific immunogen.
Alias	Insulin receptor (IR) (EC 2.7.10.1) (CD antigen CD220) [Cleaved into: Insulin receptor subunit alpha; Insulin receptor subunit beta]
Immunogen Species	Homo sapiens (Human)
Target Names	INSR

Image



Immunohistochemical analysis of paraffin-embedded Human-breast, antibody was diluted at 1:100

Usage For Research Use Only. Not for use in diagnostic or therapeutic procedures.