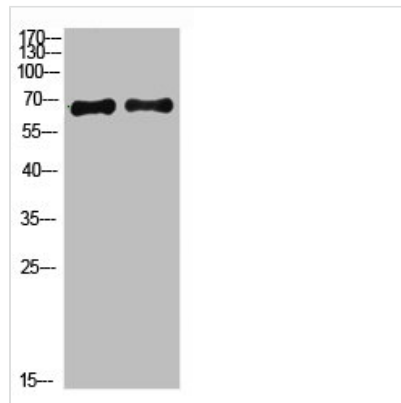




# Acetyl-ACSS1 (K642) Antibody

<b>Product Code</b>	CSB-PA848164
<b>Storage</b>	Upon receipt, store at -20°C or -80°C. Avoid repeated freeze.
<b>Uniprot No.</b>	Q9NUB1
<b>Immunogen</b>	Synthesized Acetyl peptide derived from Human ACSS1. at AA range: K642
<b>Raised In</b>	Rabbit
<b>Species Reactivity</b>	Human,Mouse,Rat
<b>Tested Applications</b>	WB,ELISA;WB:1:500-2000,ELISA:1:10000-20000
<b>Form</b>	Liquid
<b>Conjugate</b>	Non-conjugated
<b>Storage Buffer</b>	Liquid in PBS containing 50% glycerol, 0.5% BSA and 0.02% sodium azide.
<b>Purification Method</b>	The antibody was affinity-purified from rabbit antiserum by affinity-chromatography using epitope-specific immunogen.
<b>Alias</b>	Acetyl-coenzyme A synthetase 2-like, mitochondrial (EC 6.2.1.1) (Acetate--CoA ligase 2) (Acetyl-CoA synthetase 2) (AceCS2) (Acyl-CoA synthetase short-chain family member 1)
<b>Immunogen Species</b>	Homo sapiens (Human)
<b>Target Names</b>	ACSS1

## Image



Western Blot analysis of 1,293T 2,hela cells using primary antibody diluted at 1:1000(4°C overnight). Secondary antibody:Goat Anti-rabbit IgG IRDye 800( diluted at 1:5000, 25°C, 1 hour)

## Usage

For Research Use Only. Not for use in diagnostic or therapeutic procedures.