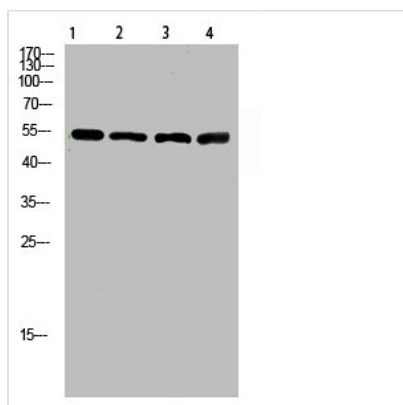




# ATP6AP1 Antibody

<b>Product Code</b>	CSB-PA576962
<b>Storage</b>	Upon receipt, store at -20°C or -80°C. Avoid repeated freeze.
<b>Uniprot No.</b>	Q15904
<b>Immunogen</b>	Synthesized peptide derived from Human V-ATPase S1. at AA range: 421-470
<b>Raised In</b>	Rabbit
<b>Species Reactivity</b>	Human,Mouse,Rat
<b>Tested Applications</b>	WB,ELISA;WB:1:500-2000,ELISA:1:10000-20000
<b>Form</b>	Liquid
<b>Conjugate</b>	Non-conjugated
<b>Storage Buffer</b>	Liquid in PBS containing 50% glycerol, 0.5% BSA and 0.02% sodium azide.
<b>Purification Method</b>	The antibody was affinity-purified from rabbit antiserum by affinity-chromatography using epitope-specific immunogen.
<b>Alias</b>	V-type proton ATPase subunit S1 (V-ATPase subunit S1) (Protein XAP-3) (V-ATPase Ac45 subunit) (V-ATPase S1 accessory protein) (Vacuolar proton pump subunit S1)
<b>Immunogen Species</b>	Homo sapiens (Human)
<b>Target Names</b>	ATP6AP1

## Image



Western Blot analysis of 1,mouse-lung 2,mouse-brain 3,mouse-spleen 4,mouse-kidney cells using primary antibody diluted at 1:500(4°C overnight). Secondary antibody:Goat Anti-rabbit IgG IRDye 800( diluted at 1:5000, 25°C, 1 hour)

## Usage

For Research Use Only. Not for use in diagnostic or therapeutic procedures.