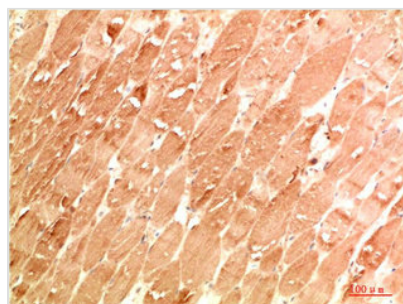




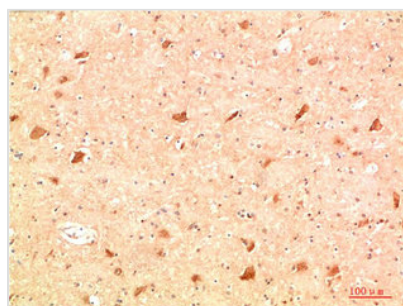
# ATG4A Antibody

<b>Product Code</b>	CSB-PA227217
<b>Storage</b>	Upon receipt, store at -20°C or -80°C. Avoid repeated freeze.
<b>Uniprot No.</b>	Q8WYN0
<b>Immunogen</b>	Recombinant Protein
<b>Raised In</b>	Rabbit
<b>Species Reactivity</b>	Human,Mouse,Rat
<b>Tested Applications</b>	IHC, ELISA; IHC:1:50-1:200, ELISA:1:10000
<b>Form</b>	Liquid
<b>Conjugate</b>	Non-conjugated
<b>Storage Buffer</b>	PBS, pH 7.4, containing 0.02% sodium azide as Preservative and 50% Glycerol.
<b>Purification Method</b>	The antibody was affinity-purified from rabbit serum by affinity-chromatography using specific immunogen.
<b>Alias</b>	Cysteine protease ATG4A (EC 3.4.22.-) (AUT-like 2 cysteine endopeptidase) (Autophagin-2) (Autophagy-related cysteine endopeptidase 2) (Autophagy-related protein 4 homolog A) (hAPG4A)
<b>Immunogen Species</b>	Homo sapiens (Human)
<b>Target Names</b>	ATG4A

## Image



Immunohistochemical analysis of paraffin-embedded Human Skeletal Muscle Tissue using ATG4a Rabbit pAb diluted at 1:200



Immunohistochemical analysis of paraffin-embedded Human Brain Tissue using ATG4a Rabbit pAb diluted at 1:200