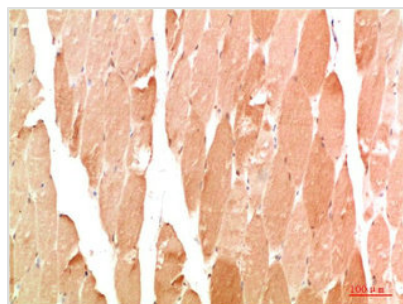




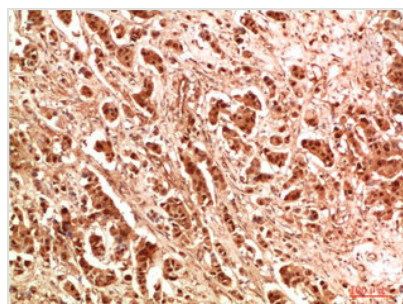
WIPI2 Antibody

Product Code	CSB-PA531726
Storage	Upon receipt, store at -20°C or -80°C. Avoid repeated freeze.
Uniprot No.	Q9Y4P8
Immunogen	Recombinant Protein
Raised In	Rabbit
Species Reactivity	Human,Mouse,Rat
Tested Applications	IHC, ELISA; IHC:1:50-1:200, ELISA:1:10000
Form	Liquid
Conjugate	Non-conjugated
Storage Buffer	Liquid in PBS containing 50% glycerol, 0.5% BSA and 0.02% sodium azide.
Purification Method	The antibody was affinity-purified from rabbit serum by affinity-chromatography using specific immunogen.
Alias	WD repeat domain phosphoinositide-interacting protein 2 (WIPI-2) (WIPI49-like protein 2)
Immunogen Species	Homo sapiens (Human)
Target Names	WIPI2

Image



Immunohistochemical analysis of paraffin-embedded Human Skeletal Muscle Tissue using WIPI2 Rabbit pAb diluted at 1:200



Immunohistochemical analysis of paraffin-embedded Human Breast Carcinoma Tissue using WIPI2 Rabbit pAb diluted at 1:200

Usage

For Research Use Only. Not for use in diagnostic or therapeutic procedures.