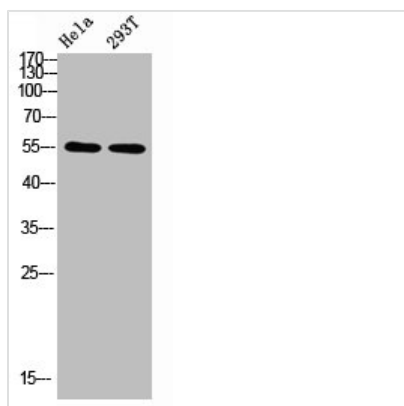




TUBA1A/TUBA1B/TUBA1C/TUBA3C/TUBA8/TUBA4A Antibody

Product Code	CSB-PA193238
Storage	Upon receipt, store at -20°C or -80°C. Avoid repeated freeze.
Uniprot No.	Q71U36/P68363/Q9BQE3/Q13748/P68366/Q9NY65
Immunogen	Synthetic peptide from AA range: 380-420
Raised In	Rabbit
Species Reactivity	Human,Mouse,Rat
Tested Applications	WB,ELISA;WB:1:500-2000,ELISA:1:10000-20000
Form	Liquid
Conjugate	Non-conjugated
Storage Buffer	Liquid in PBS containing 50% glycerol, 0.5% BSA and 0.02% sodium azide.
Purification Method	The antibody was affinity-purified from rabbit serum by affinity-chromatography using specific immunogen.
Alias	Alpha-tubulin 1 antibody ALS22 antibody B ALPHA 1 antibody bA408E5.3 antibody H2 ALPHA antibody Hum a tub1 antibody Hum a tub2 antibody LIS3 antibody MGC171407 antibody MGC55332 antibody TBA4A_HUMAN antibody Testis-specific alpha-tubulin antibody TUBA1 antibody TUBA1A antibody tuba11 antibody Tuba4a antibody Tubulin alpha 1 chain antibody Tubulin alpha antibody Tubulin alpha-1 chain antibody tubulin alpha-1B chain antibody Tubulin alpha-4A chain antibody Tubulin H2-alpha antibody Tubulin, alpha 1 (testis specific) antibody tubulin, alpha 1, like antibody Tubulin, alpha 4a antibody Tubulin, alpha, testis-specific antibody Tubulin, alpha-1 antibody
Immunogen Species	Homo sapiens (Human)
Target Names	TUBA1A/TUBA1B/TUBA1C/TUBA3C/TUBA4A/TUBA8

Image



Western blot analysis of HELA 293T Cell Lysate using antibody

Usage

For Research Use Only. Not for use in diagnostic or therapeutic procedures.