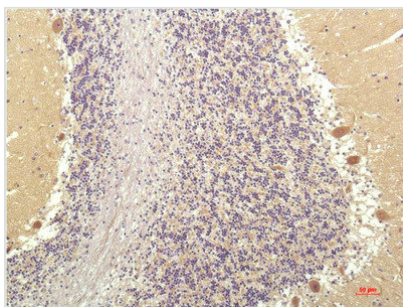




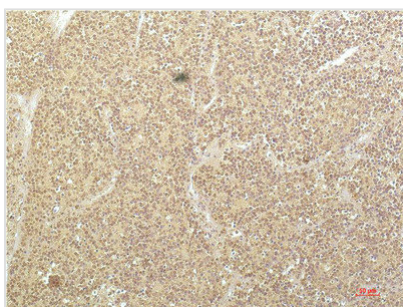
SGK1 Monoclonal Antibody

| | |
|----------------------------|--|
| Product Code | CSB-MA286402 |
| Storage | Upon receipt, store at -20°C or -80°C. Avoid repeated freeze. |
| Research Use | Shipped at 4°C. Upon delivery aliquot and store at -20°C or -80°C. Avoid repeated freeze. |
| Uniprot No. | O00141 |
| Immunogen | Synthetic Peptide of SGK1 at AA range of 350-430 |
| Raised In | Mouse |
| Species Reactivity | Human,Mouse,Rat |
| Tested Applications | ELISA,IHC;Recommended dilution:IHC:1:100-1:200 |
| Form | Liquid |
| Conjugate | Non-conjugated |
| Storage Buffer | Liquid in PBS containing 50% glycerol, 0.5% BSA and 0.02% sodium azide. |
| Purification Method | The antibody was affinity-purified from mouse ascites by affinity-chromatography using specific immunogen. |
| Alias | SGK1 |
| Product Type | Monoclonal Antibody |
| Immunogen Species | Homo sapiens (Human) |
| Clone No. | 2G12 |

Image



Immunohistochemical analysis of paraffin-embedded Human Brain Tissue using SGK1 Mouse mAb diluted at 1:200.



Immunohistochemical analysis of paraffin-embedded Human Kidney Carcinoma Tissue using SGK1 Mouse mAb diluted at 1:200.

Usage

For Research Use Only. Not for use in diagnostic or therapeutic procedures.