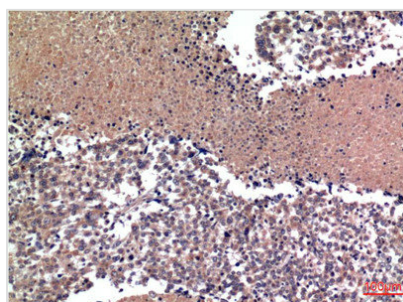




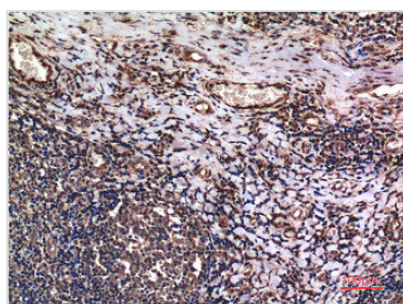
# CCNB1 Monoclonal Antibody

|                            |  |
|----------------------------|--|
| <b>Product Code</b>        | CSB-MA124445   |
| <b>Storage</b>             | Upon receipt, store at -20°C or -80°C. Avoid repeated freeze.  |
| <b>Research Use</b>        | Shipped at 4°C. Upon delivery aliquot and store at -20°C or -80°C. Avoid repeated freeze.                  |
| <b>Uniprot No.</b>         | P14635   |
| <b>Immunogen</b>           | Synthetic Peptide of Cyclin B1 at AA range of 60-140   |
| <b>Raised In</b>           | Mouse  |
| <b>Species Reactivity</b>  | Human,Mouse,Rat  |
| <b>Tested Applications</b> | ELISA,IHC;Recommended dilution:IHC:1:100-1:200   |
| <b>Form</b>                | Liquid   |
| <b>Conjugate</b>           | Non-conjugated   |
| <b>Storage Buffer</b>      | Liquid in PBS containing 50% glycerol, 0.5% BSA and 0.02% sodium azide.                                    |
| <b>Purification Method</b> | The antibody was affinity-purified from mouse ascites by affinity-chromatography using specific immunogen. |
| <b>Alias</b>               | CCNB1  |
| <b>Product Type</b>        | Monoclonal Antibody  |
| <b>Immunogen Species</b>   | Homo sapiens (Human)   |
| <b>Clone No.</b>           | 27C5   |

## Image



Immunohistochemical analysis of paraffin-embedded Human lung Tissue using Cyclin B1 Mouse mAb diluted at 1:200.



Immunohistochemical analysis of paraffin-embedded Human Tonsil Tissue using Cyclin B1 Mouse mAb diluted at 1:200.

## Usage

For Research Use Only. Not for use in diagnostic or therapeutic procedures.