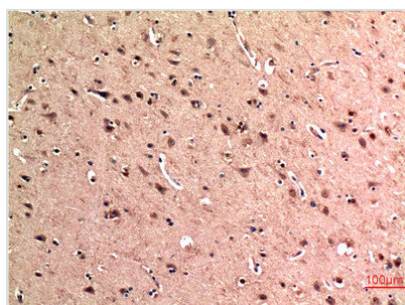




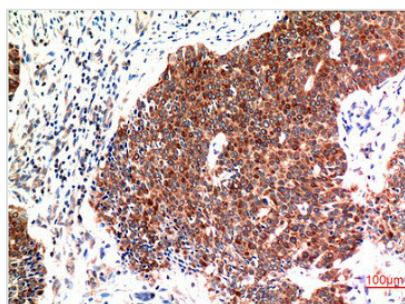
BECN1 Monoclonal Antibody

Product Code	CSB-MA365521
Storage	Upon receipt, store at -20°C or -80°C. Avoid repeated freeze.
Research Use	Shipped at 4°C. Upon delivery aliquot and store at -20°C or -80°C. Avoid repeated freeze.
Uniprot No.	Q14457
Immunogen	Synthetic Peptide of Beclin-1 at AA range of 110-190
Raised In	Mouse
Species Reactivity	Human,Mouse,Rat
Tested Applications	ELISA,WB,IHC;Recommended dilution:WB:1:500-1:5000,IHC:1:50-1:500
Form	Liquid
Conjugate	Non-conjugated
Storage Buffer	Liquid in PBS containing 50% glycerol, 0.5% BSA and 0.02% sodium azide.
Purification Method	The antibody was affinity-purified from mouse ascites by affinity-chromatography using specific immunogen.
Alias	BECN1
Product Type	Monoclonal Antibody
Immunogen Species	Homo sapiens (Human)
Clone No.	6E10

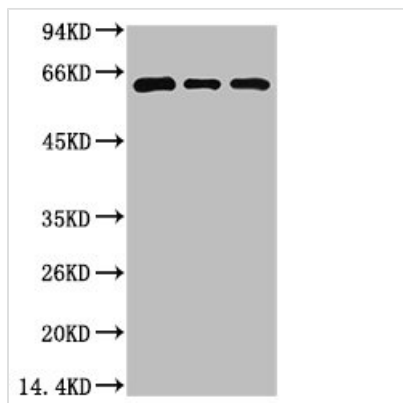
Image



Immunohistochemical analysis of paraffin-embedded Human Brain Tissue using Beclin-1 Mouse mAb diluted at 1:200.



Immunohistochemical analysis of paraffin-embedded Human Breast Carcinoma Tissue using Beclin-1 Mouse mAb diluted at 1:200.



Western blot analysis of 1) 293T Cell Lysate, 2) C2C12 Cell Lysate, 3) Rat Brain Tissue Lysate using Beclin-1 Mouse mAb diluted at 1:2000.

Usage

For Research Use Only. Not for use in diagnostic or therapeutic procedures.