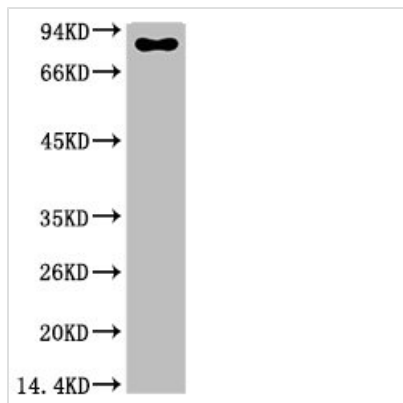




# Luciferase Monoclonal Antibody

<b>Product Code</b>	CSB-MA999521
<b>Storage</b>	Upon receipt, store at -20°C or -80°C. Avoid repeated freeze.
<b>Research Use</b>	Shipped at 4°C. Upon delivery aliquot and store at -20°C or -80°C. Avoid repeated freeze.
<b>Uniprot No.</b>	P08659
<b>Immunogen</b>	Synthetic Peptide of Luciferase
<b>Raised In</b>	Mouse
<b>Species Reactivity</b>	Firefly
<b>Tested Applications</b>	ELISA, WB; Recommended dilution: WB: 1:500-1:5000
<b>Form</b>	Liquid
<b>Conjugate</b>	Non-conjugated
<b>Storage Buffer</b>	Liquid in PBS containing 50% glycerol, 0.5% BSA and 0.02% sodium azide.
<b>Purification Method</b>	The antibody was affinity-purified from mouse ascites by affinity-chromatography using specific immunogen.
<b>Product Type</b>	Monoclonal Antibody
<b>Immunogen Species</b>	Firefly

## Image



Western blot analysis of Firefly Luciferase Transfected Hela Cell Lysate using Luciferase Mouse mAb diluted at 1:2000.