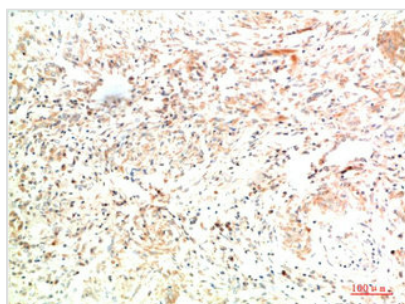




COL2A1 Monoclonal Antibody

| | |
|----------------------------|-----------------------------------------------------------------------------------------------------------------|
| Product Code | CSB-MA217046 |
| Storage | Upon receipt, store at -20°C or -80°C. Avoid repeated freeze. |
| Research Use | Shipped at 4°C. Upon delivery aliquot and store at -20°C or -80°C. Avoid repeated freeze. |
| Uniprot No. | P02458 |
| Immunogen | Synthetic Peptide |
| Raised In | Mouse |
| Species Reactivity | Human,Mouse,Rat |
| Tested Applications | ELISA,IHC;Recommended dilution:IHC:1:50-1:200 |
| Form | Liquid |
| Conjugate | Non-conjugated |
| Storage Buffer | PBS, pH 7.4, containing 0.02% sodium azide as Preservative and 50% Glycerol. |
| Purification Method | The antibody was affinity-purified from mouse ascites by affinity-chromatography using specific immunogen. |
| Alias | Collagen alpha-1(II) chain (Alpha-1 type II collagen) [Cleaved into: Collagen alpha-1(II) chain; Chondrocalcin] |
| Product Type | Monoclonal Antibody |
| Immunogen Species | Homo sapiens (Human) |

Image



Immunohistochemical analysis of paraffin-embedded Human Lung Carcinoma Tissue using Collagen II Mouse mAb diluted at 1:200